

Anti-MYL2 Antibody (R3C35)

Summary

Catalog No.	RHC84602
Clone ID	R3C35
Host species	Mouse
Tested applications	WB: 1:500-1:2000
Species reactivity	Human
Form	Liquid
Storage buffer	0.01M PBS, pH 7.4, 0.05% Sodium Azide.
Concentration	1 mg/ml
Purity	>95% as determined by SDS-PAGE.
Clonality	Monoclonal
Isotype	IgG1
Applications	WB
Target	Ventricular myosin light chain 2, Myosin light chain 2, slow skeletal/ventricular muscle isoform, Cardiac myosin light chain 2, MLC-2v, MLC-2s/v, MLC-2, Myosin regulatory light chain 2, ventricular/cardiac muscle isoform, MLC2, MYL2
Purification	Protein A/G purified from cell culture supernatant.
Endotoxin level	Please contact with the lab for this information.
Accession	P10916

Stability and Storage

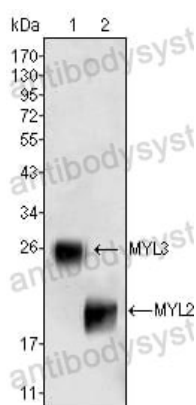
Use a manual defrost freezer and avoid repeated freeze-thaw cycles.

Store at 4°C short term (1-2 weeks). Store at -20°C 12 months. Store at -80°C long term.

Note

For research use only.

Data Image



Western blot

Western blot analysis using MYL3 (1) and MYL2 (2) mouse mAb against rat fetal heart tissue lysate.