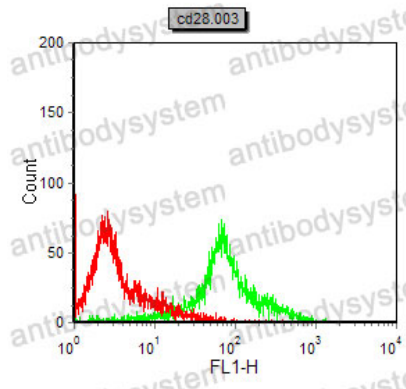


Anti-CD28 Antibody (R3C30)

Summary

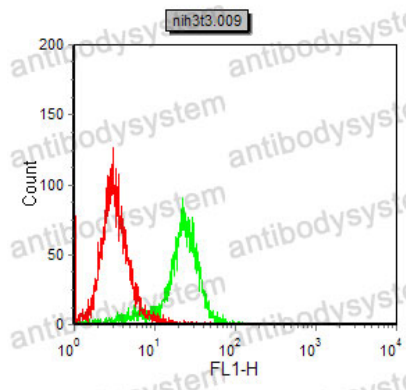
Catalog No.	RHC83403
Clone ID	R3C30
Host species	Mouse
Tested applications	FCM: 1:200-1:400
Species reactivity	Human, Mouse, Rat, Monkey
Form	Liquid
Storage buffer	0.01M PBS, pH 7.4, 0.05% Sodium Azide.
Concentration	1 mg/ml
Purity	>95% as determined by SDS-PAGE.
Clonality	Monoclonal
Isotype	IgG1
Applications	FCM
Target	CD28, TP44, T-cell-specific surface glycoprotein CD28
Purification	Protein A/G purified from cell culture supernatant.
Endotoxin level	Please contact with the lab for this information.
Accession	P10747
Stability and Storage	Use a manual defrost freezer and avoid repeated freeze-thaw cycles. Store at 4°C short term (1-2 weeks). Store at -20°C 12 months. Store at -80°C long term.
Note	For research use only.

Data Image



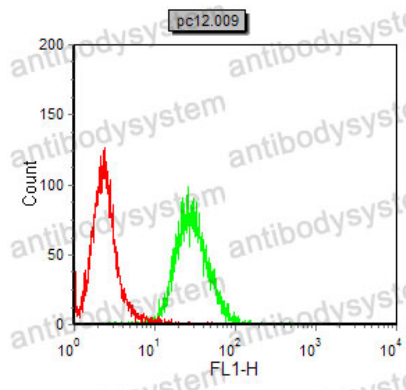
Flow Cytometry

Flow cytometric analysis of PBMC cells using CD28 mouse mAb (green) and negative control (red).



Flow Cytometry

Flow cytometric analysis of NIH3T3 cells using CD28 mouse mAb (green) and negative control (red).



Flow Cytometry

Flow cytometric analysis of PC-12 cells using CD28 mouse mAb (green) and negative control (red).