

# Anti-ALPG Antibody (R3C23)

## Summary

---

<b>Catalog No.</b>	RHC82901
<b>Clone ID</b>	R3C23
<b>Host species</b>	Mouse
<b>Tested applications</b>	ELISA: 1:10000, FCM: 1:200-1:400, IF: 1:50-1:200, IHC: 1:200-1:1000, WB: 1:500-1:2000
<b>Species reactivity</b>	Human
<b>Form</b>	Liquid
<b>Storage buffer</b>	0.01M PBS, pH 7.4, 0.05% Sodium Azide.
<b>Concentration</b>	1 mg/ml
<b>Purity</b>	>95% as determined by SDS-PAGE.
<b>Clonality</b>	Monoclonal
<b>Isotype</b>	IgG2b
<b>Applications</b>	ELISA, FCM, IF, IHC, WB
<b>Target</b>	Placental alkaline phosphatase-like, PLAP-like, ALPPL2, Alkaline phosphatase, placental-like, ALP-1, GCAP, Germ cell alkaline phosphatase, ALPPL, Alkaline phosphatase Nagao isozyme, ALPG, Alkaline phosphatase, germ cell type
<b>Purification</b>	Protein A/G purified from cell culture supernatant.
<b>Endotoxin level</b>	Please contact with the lab for this information.
<b>Accession</b>	P10696

**Stability and Storage**

Use a manual defrost freezer and avoid repeated freeze-thaw cycles.

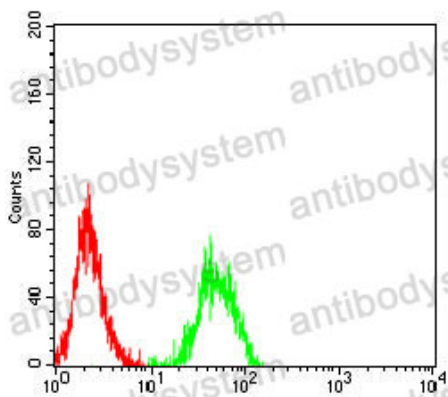
Store at 4°C short term (1-2 weeks). Store at -20°C 12 months. Store at -80°C long term.

**Note**

For research use only.

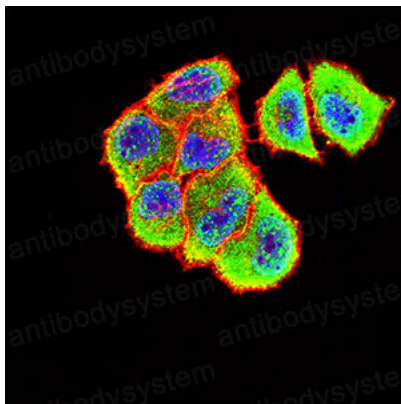
**Data Image**

---



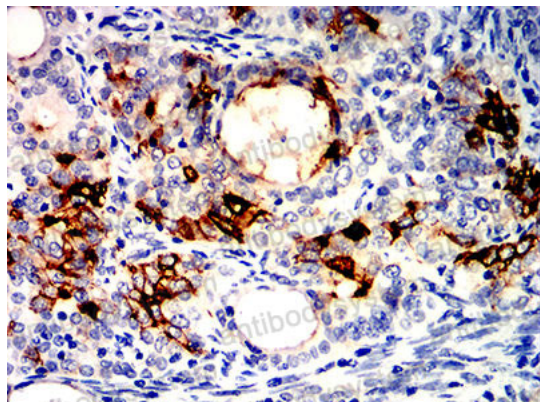
Flow Cytometry

Flow cytometric analysis of Jurkat cells using ALPG mouse mAb (green) and negative control (red).



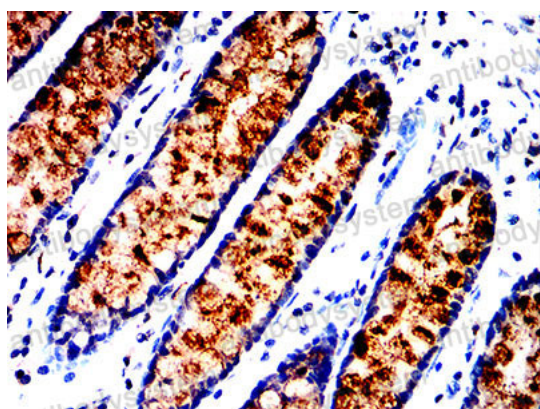
Immunofluorescence

Immunofluorescence analysis of HeLa cells using ALPG mouse mAb (green). Blue: DRAQ5 fluorescent DNA dye. Red: Actin filaments have been labeled with Alexa Fluor- 555 phalloidin.



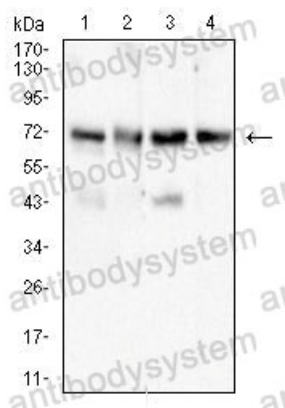
Immunohistochemical

Immunohistochemical analysis of paraffin-embedded human cervical cancer tissues using ALPG mouse mAb with DAB staining.



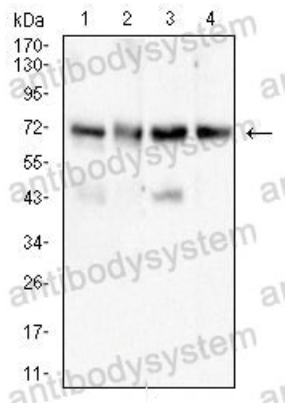
Immunohistochemical

Immunohistochemical analysis of paraffin-embedded human rectum cancer tissues using ALPG mouse mAb with DAB staining.



Western blot

Western blot analysis using ALPG mouse mAb against SK-OV-3 (1), Hela (2), HepG2 (3), and A431 (4) cell lysate.



Western blot

Western blot analysis using ALPG mouse mAb against SK-OV-3 (1), Hela (2), HepG2 (3), and A431 (4) cell lysate.