

Anti-ALPG Antibody (R3C22)

Summary

Catalog No.	RHC82902
Clone ID	R3C22
Host species	Mouse
Tested applications	ELISA: 1:10000, FCM: 1:200-1:400, IHC: 1:200-1:1000, WB: 1:500-1:2000
Species reactivity	Human
Form	Liquid
Storage buffer	0.01M PBS, pH 7.4, 0.05% Sodium Azide.
Concentration	1 mg/ml
Purity	>95% as determined by SDS-PAGE.
Clonality	Monoclonal
Isotype	IgG1
Applications	ELISA, FCM, IHC, WB
Target	Placental alkaline phosphatase-like, PLAP-like, ALPPL2, Alkaline phosphatase, placental-like, ALP-1, GCAP, Germ cell alkaline phosphatase, ALPPL, Alkaline phosphatase Nagao isozyme, ALPG, Alkaline phosphatase, germ cell type
Purification	Protein A/G purified from cell culture supernatant.
Endotoxin level	Please contact with the lab for this information.
Accession	P10696

Stability and Storage

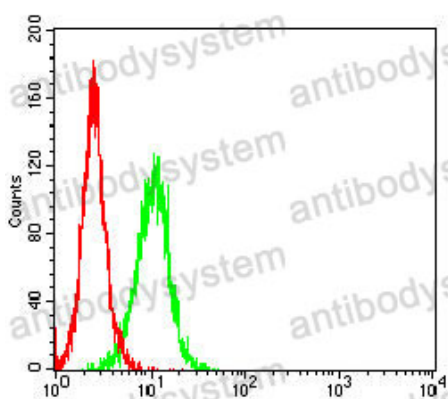
Use a manual defrost freezer and avoid repeated freeze-thaw cycles.

Store at 4°C short term (1-2 weeks). Store at -20°C 12 months. Store at -80°C long term.

Note

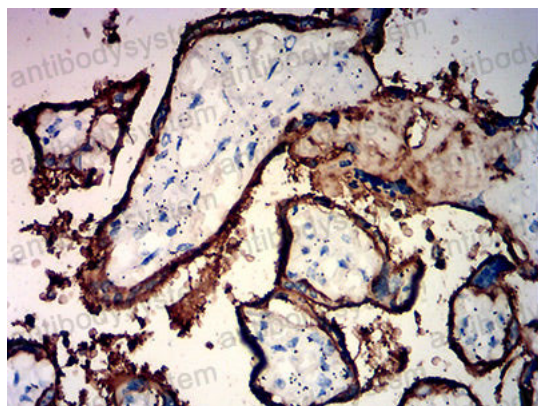
For research use only.

Data Image



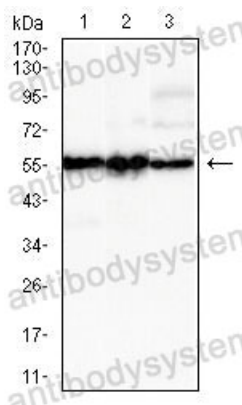
Flow Cytometry

Flow cytometric analysis of U937 cells using ALPG mouse mAb (green) and negative control (red).



Immunohistochemical

Immunohistochemical analysis of paraffin-embedded human placenta tissues using ALPG mouse mAb with DAB staining.



Western blot

Western blot analysis using ALPG mouse mAb against SK-OV-3 (1), Hela (2), and LOVO (3) cell lysate.