

# Anti-CHGA Antibody (R3C20)

## Summary

---

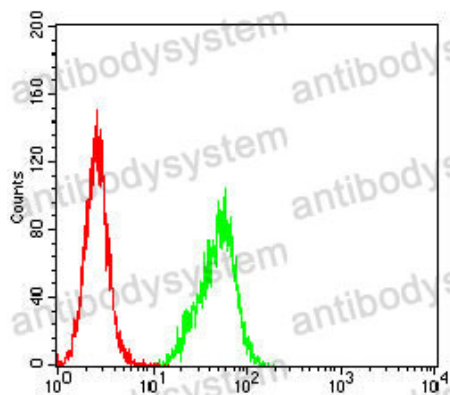
<b>Catalog No.</b>	RHC82705
<b>Clone ID</b>	R3C20
<b>Host species</b>	Mouse
<b>Tested applications</b>	ELISA: 1:10000, FCM: 1:200-1:400, IHC: 1:200-1:1000, WB: 1:500-1:2000
<b>Species reactivity</b>	Human
<b>Form</b>	Liquid
<b>Storage buffer</b>	0.01M PBS, pH 7.4, 0.05% Sodium Azide.
<b>Concentration</b>	1 mg/ml
<b>Purity</b>	>95% as determined by SDS-PAGE.
<b>Clonality</b>	Monoclonal
<b>Isotype</b>	IgG2b
<b>Applications</b>	ELISA, FCM, IHC, WB
<b>Target</b>	Vasostatin I, Pituitary secretory protein I, Vasostatin II, Chromogranin-A, SP-I, CgA, SL21, CHGA
<b>Purification</b>	Protein A/G purified from cell culture supernatant.
<b>Endotoxin level</b>	Please contact with the lab for this information.
<b>Accession</b>	P10645
<b>Stability and Storage</b>	Use a manual defrost freezer and avoid repeated freeze-thaw cycles. Store at 4°C short term (1-2 weeks). Store at -20°C 12 months. Store at -80°C long term.

**Note**

For research use only.

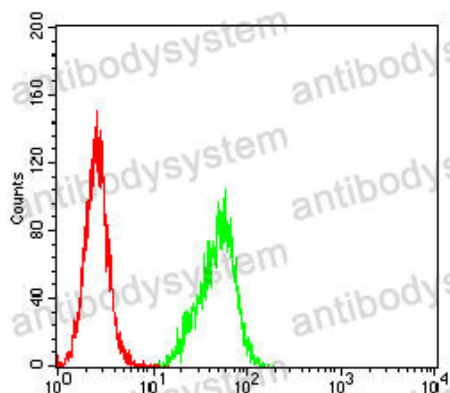
**Data Image**

---



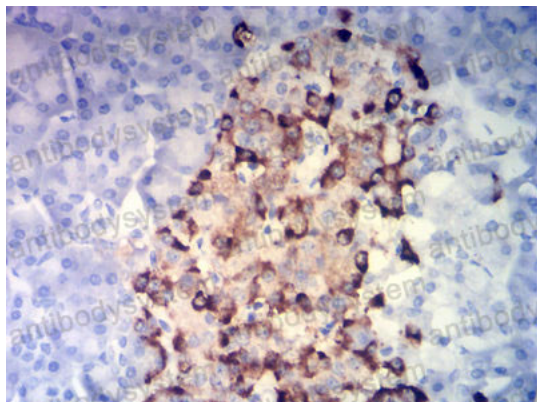
Flow Cytometry

Flow cytometric analysis of C6 cells using CHGA mouse mAb (green) and negative control (red).



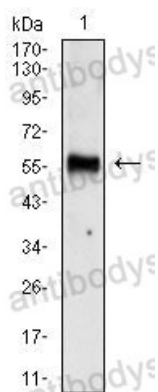
Flow Cytometry

Flow cytometric analysis of Hela cells using CHGA mouse mAb (green) and negative control (red).



Immunohistochemical

Immunohistochemical analysis of paraffin-embedded human pancreatic tissues using CHGA mouse mAb with DAB staining.



Western blot

Western blot analysis using CHGA mouse mAb against SH-SY5Y (1) cell lysate.