

Anti-MAPT/Tau/PHF-tau Antibody (R3C17)

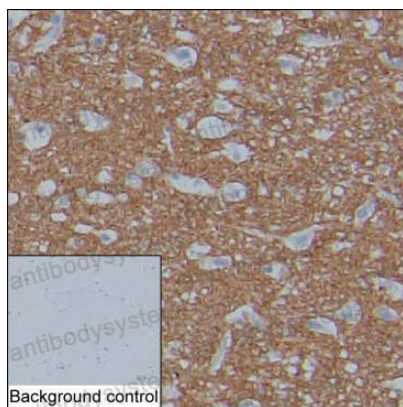
Summary

Catalog No.	RHC82447
Clone ID	R3C17
Host species	Mouse
Tested applications	IHC: 1:50-1:250, WB: 1:500-1:1000
Species reactivity	Human
Form	Liquid
Storage buffer	0.01M PBS, pH 7.4, 0.05% Sodium Azide.
Concentration	1 mg/ml
Purity	>95% as determined by SDS-PAGE.
Clonality	Monoclonal
Isotype	IgG2a
Applications	IHC, WB
Target	MAPTL, Paired helical filament-tau, MTBT1, Microtubule-associated protein tau, TAU, Neurofibrillary tangle protein, MAPT, PHF-tau
Purification	Protein A/G purified from cell culture supernatant.
Endotoxin level	Please contact with the lab for this information.
Accession	P10636
Stability and Storage	Use a manual defrost freezer and avoid repeated freeze-thaw cycles. Store at 4°C short term (1-2 weeks). Store at -20°C 12 months. Store at -80°C long term.

Note

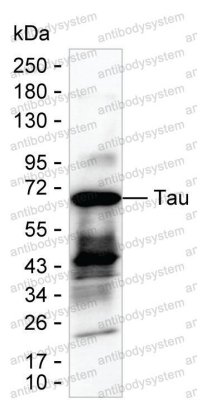
For research use only.

Data Image



Immunohistochemical

IHC-P analysis of cerebral cortex tissue by Tau antibody (RHC82447). IHC-P was performed using sections of the formalin-fixed paraffin-embedded cerebral cortex tissue; Result: Neuropil are positively stained.



Western blot

Result: RHC82447 can detect recombinant human Tau by Western blotting.