

Anti-DLAT/PDC-E2 Antibody (R3C15)

Summary

Catalog No.	RHC81204
Clone ID	R3C15
Host species	Mouse
Tested applications	IF: 1:50-1:200, IP: 1:20, WB: 1:500-1:1000
Species reactivity	Human, Monkey
Form	Liquid
Storage buffer	0.01M PBS, pH 7.4, 0.5% BSA, 0.05% Sodium Azide and 50% Glycerol.
Concentration	1 mg/ml
Purity	>95% as determined by SDS-PAGE.
Clonality	Monoclonal
Isotype	IgG1
Applications	IF, IP, WB
Target	DLTA, M2 antigen complex 70 kDa subunit, 70 kDa mitochondrial autoantigen of primary biliary cirrhosis, Pyruvate dehydrogenase complex component E2, PDC-E2, DLAT, PBC, Dihydrolipoamide acetyltransferase component of pyruvate dehydrogenase complex, Dihydrolipoyllysine-residue acetyltransferase component of pyruvate dehydrogenase complex, mitochondrial, PDCE2
Purification	Protein A/G purified from cell culture supernatant.
Endotoxin level	Please contact with the lab for this information.
Accession	P10515

Stability and Storage

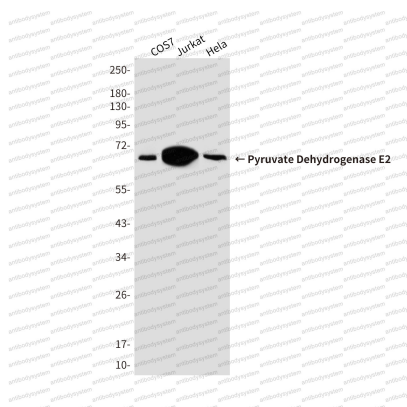
Use a manual defrost freezer and avoid repeated freeze-thaw cycles.

Store at 4°C short term (1-2 weeks). Store at -20°C 12 months. Store at -80°C long term.

Note

For research use only.

Data Image



Western blot

Western blot analysis of Pyruvate Dehydrogenase E2 in COS7, Jurkat and HeLa lysates using Pyruvate Dehydrogenase E2 antibody.