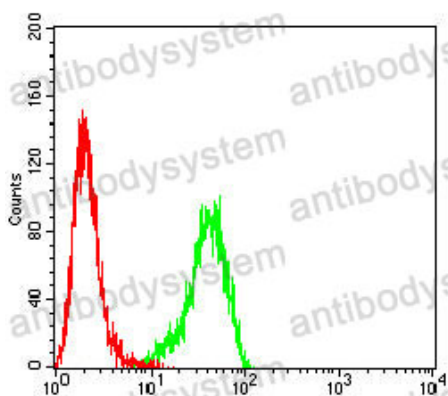


Anti-BCL2 Antibody (R3C09)

Summary

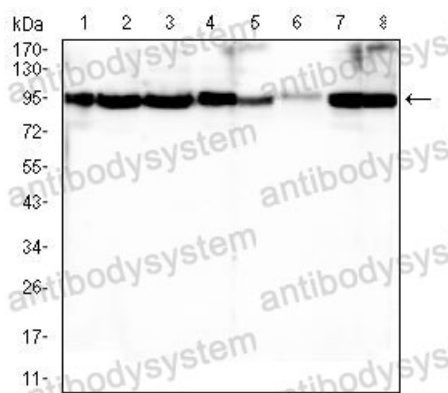
Catalog No.	RHC81007
Clone ID	R3C09
Host species	Mouse
Tested applications	ELISA: 1:10000, FCM: 1:200-1:400, WB: 1:500-1:2000
Species reactivity	Human, Rat
Form	Liquid
Storage buffer	0.01M PBS, pH 7.4, 0.05% Sodium Azide.
Concentration	1 mg/ml
Purity	>95% as determined by SDS-PAGE.
Clonality	Monoclonal
Isotype	IgG1
Applications	ELISA, FCM, WB
Target	Apoptosis regulator Bcl-2, BCL2
Purification	Protein A/G purified from cell culture supernatant.
Endotoxin level	Please contact with the lab for this information.
Accession	P10415
Stability and Storage	Use a manual defrost freezer and avoid repeated freeze-thaw cycles. Store at 4°C short term (1-2 weeks). Store at -20°C 12 months. Store at -80°C long term.
Note	For research use only.

Data Image



Flow Cytometry

Flow cytometric analysis of THP-1 cells using BCL2 mouse mAb (green) and negative control (red).



Western blot

Western blot analysis using BCL2 mouse mAb against Raji (1), MCF-7 (2), Jurkat (3), A549 (4), HEK293 (5), T47D (6), Hela (7), and C6 (8) cell lysate.