

# Anti-GZMB Antibody (R3C02)

## Summary

---

<b>Catalog No.</b>	RHC79003
<b>Clone ID</b>	R3C02
<b>Host species</b>	Mouse
<b>Tested applications</b>	ELISA: 1:10000, IHC: 1:200-1:1000
<b>Species reactivity</b>	Human
<b>Form</b>	Liquid
<b>Storage buffer</b>	0.01M PBS, pH 7.4, 0.05% Sodium Azide.
<b>Concentration</b>	1 mg/ml
<b>Purity</b>	>95% as determined by SDS-PAGE.
<b>Clonality</b>	Monoclonal
<b>Isotype</b>	IgG2a
<b>Applications</b>	ELISA, IHC
<b>Target</b>	Cathepsin G-like 1, Granzyme-2, GZMB, Fragmentin-2, Human lymphocyte protein, HLP, CTLA-1, CGL1, CTSG1, CSPB, Lymphocyte protease, T-cell serine protease 1-3E, Granzyme B, CTLA1, GRB, C11, Cytotoxic T-lymphocyte proteinase 2, SECT
<b>Purification</b>	Protein A/G purified from cell culture supernatant.
<b>Endotoxin level</b>	Please contact with the lab for this information.
<b>Accession</b>	P10144

**Stability and Storage**

Use a manual defrost freezer and avoid repeated freeze-thaw cycles.

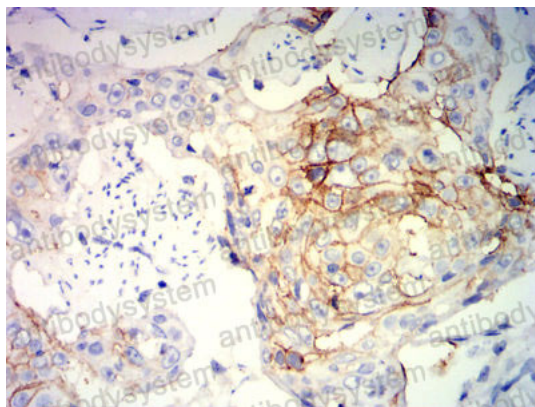
Store at 4°C short term (1-2 weeks). Store at -20°C 12 months. Store at -80°C long term.

**Note**

For research use only.

**Data Image**

---



Immunohistochemical analysis of paraffin-embedded human brain tissues using GZMB mouse mAb with DAB staining.

Immunohistochemical