

Anti-GLI2 Antibody (R3C01)

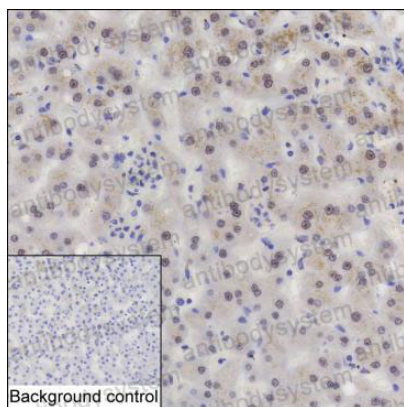
Summary

Catalog No.	RHC77901
Clone ID	R3C01
Host species	Mouse
Tested applications	IHC: 1:500
Species reactivity	Human
Form	Liquid
Storage buffer	0.01M PBS, pH 7.4, 0.05% Sodium Azide.
Concentration	1 mg/ml
Purity	>95% as determined by SDS-PAGE.
Clonality	Monoclonal
Isotype	IgG1
Applications	IHC
Target	GLI family zinc finger protein 2, THP, Tax helper protein, GLI2, Zinc finger protein GLI2
Purification	Protein A/G purified from cell culture supernatant.
Endotoxin level	Please contact with the lab for this information.
Accession	P10070
Stability and Storage	Use a manual defrost freezer and avoid repeated freeze-thaw cycles. Store at 4°C short term (1-2 weeks). Store at -20°C 12 months. Store at -80°C long term.

Note

For research use only.

Data Image



Immunohistochemical

IHC-P analysis of liver tissue by GLI2 antibody (RHC77901). IHC-P was performed using sections of the formalin-fixed paraffin-embedded liver tissue; Result: Hepatocytes are positively stained at the nuclei.