

Anti-AMY1A Antibody (R3B98)

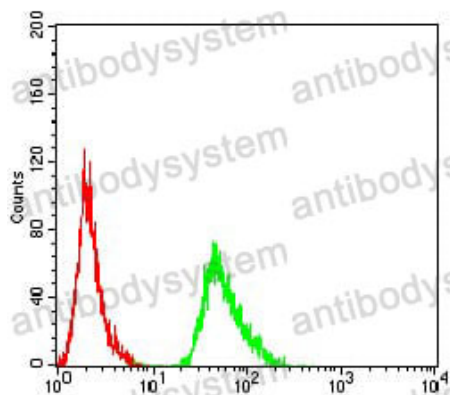
Summary

Catalog No.	RHC77402
Clone ID	R3B98
Host species	Mouse
Tested applications	ELISA: 1:10000, FCM: 1:200-1:400, WB: 1:500-1:2000
Species reactivity	Human, Rat
Form	Liquid
Storage buffer	0.01M PBS, pH 7.4, 0.05% Sodium Azide.
Concentration	1 mg/ml
Purity	>95% as determined by SDS-PAGE.
Clonality	Monoclonal
Isotype	IgG1
Applications	ELISA, FCM, WB
Target	Salivary alpha-amylase, 1,4-alpha-D-glucan glucanohydrolase 1, AMY1A, Alpha-amylase 1A, AMY1
Purification	Protein A/G purified from cell culture supernatant.
Endotoxin level	Please contact with the lab for this information.
Accession	P0DTE7, P0DUB6, P0DTE8
Stability and Storage	Use a manual defrost freezer and avoid repeated freeze-thaw cycles. Store at 4°C short term (1-2 weeks). Store at -20°C 12 months. Store at -80°C long term.

Note

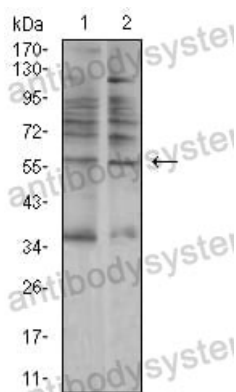
For research use only.

Data Image



Flow Cytometry

Flow cytometric analysis of MCF-7 cells using AMY1A mouse mAb (green) and negative control (red).



Western blot

Western blot analysis using AMY1A mouse mAb against A549 (1) and C6 (2) cell lysate.