

Anti-ALPI Antibody (R3B81)

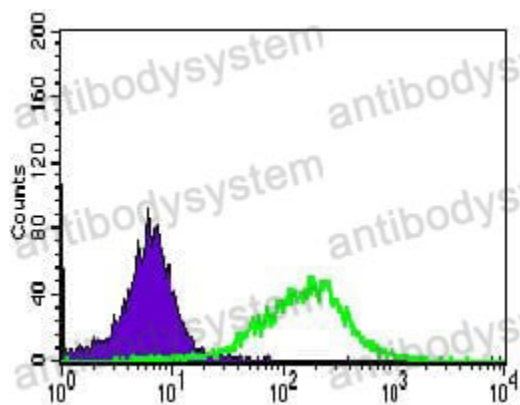
Summary

Catalog No.	RHC44401
Clone ID	R3B81
Host species	Mouse
Tested applications	ELISA: 1:10000, FCM: 1:200-1:400, WB: 1:500-1:2000
Species reactivity	Human
Form	Liquid
Storage buffer	0.01M PBS, pH 7.4, 0.05% Sodium Azide.
Concentration	1 mg/ml
Purity	>95% as determined by SDS-PAGE.
Clonality	Monoclonal
Isotype	IgG1
Applications	ELISA, FCM, WB
Target	IAP, ALPI, Intestinal-type alkaline phosphatase, Intestinal alkaline phosphatase
Purification	Protein A/G purified from cell culture supernatant.
Endotoxin level	Please contact with the lab for this information.
Accession	P09923
Stability and Storage	Use a manual defrost freezer and avoid repeated freeze-thaw cycles. Store at 4°C short term (1-2 weeks). Store at -20°C 12 months. Store at -80°C long term.

Note

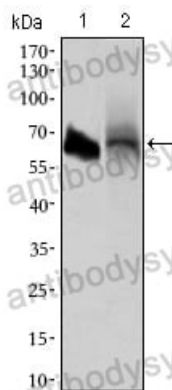
For research use only.

Data Image



Flow Cytometry

Flow cytometric analysis of HepG2 cells using ALPI mouse mAb (green) and negative control (purple).



Western blot

Western blot analysis using ALPI mouse mAb against HL60 (1) and HepG2 (2) cell lysate.