

Anti-CSF3/G-CSF Antibody (R3B79)

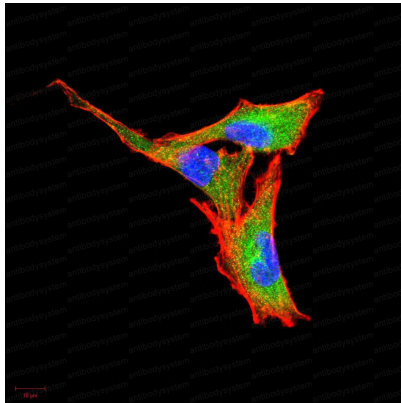
Summary

| | |
|------------------------------|---|
| Catalog No. | RHC44302 |
| Clone ID | R3B79 |
| Host species | Mouse |
| Tested applications | ELISA: 1:10000, IF: 1:200-1:1000, IHC: 1:200-1:1000 |
| Species reactivity | Human |
| Form | Liquid |
| Storage buffer | 0.01M PBS, pH 7.4, 0.05% Sodium Azide. |
| Concentration | 1 mg/ml |
| Purity | >95% as determined by SDS-PAGE. |
| Clonality | Monoclonal |
| Isotype | IgG2a |
| Applications | ELISA, IF, IHC |
| Target | C17orf33, Lenograstim, CSF3, Pluripoietin, Filgrastim, Granulocyte colony-stimulating factor, GCSF, G-CSF |
| Purification | Protein A/G purified from cell culture supernatant. |
| Endotoxin level | Please contact with the lab for this information. |
| Accession | P09919 |
| Stability and Storage | Use a manual defrost freezer and avoid repeated freeze-thaw cycles. Store at 4°C short term (1-2 weeks). Store at -20°C 12 months. Store at -80°C long term. |

Note

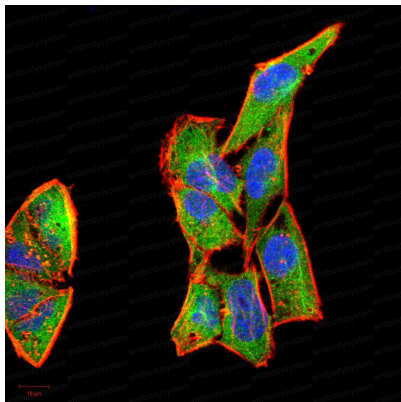
For research use only.

Data Image



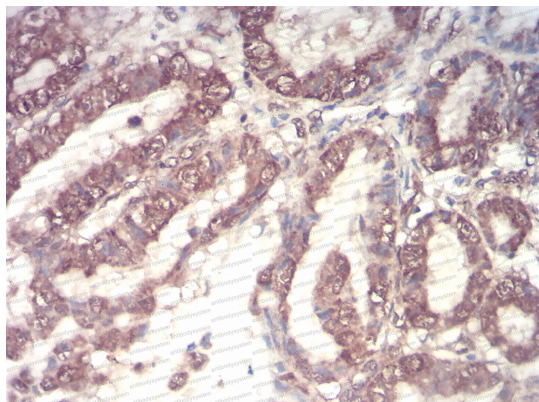
Immunofluorescence

Immunofluorescence analysis of A549 cells using CSF3 mouse mAb (green). Blue: DRAQ5 fluorescent DNA dye. Red: Actin filaments have been labeled with Alexa Fluor- 555 phalloidin.



Immunofluorescence

Immunofluorescence analysis of Hela cells using CSF3 mouse mAb (green). Blue: DRAQ5 fluorescent DNA dye. Red: Actin filaments have been labeled with Alexa Fluor- 555 phalloidin.



Immunohistochemical

Immunohistochemical analysis of paraffin-embedded human esophageal cancer tissues using CSF3 mouse mAb with DAB staining.