

Anti-PARP1 Antibody (R3B78)

Summary

Catalog No.	RHC43705
Clone ID	R3B78
Host species	Mouse
Tested applications	IHC: 1:50-1:100, WB: 1:500-1:1000
Species reactivity	Human, Mouse, Rat
Form	Liquid
Storage buffer	0.01M PBS, pH 7.4, 0.5% BSA, 0.05% Sodium Azide and 50% Glycerol.
Concentration	1 mg/ml
Purity	>95% as determined by SDS-PAGE.
Clonality	Monoclonal
Isotype	IgG1
Applications	IHC, WB
Target	PARP-1, Protein poly-ADP-ribosyltransferase PARP1, DNA ADP-ribosyltransferase PARP1, Poly [ADP-ribose] polymerase 1, PPOL, Poly[ADP-ribose] synthase 1, ADPRT 1, ADP-ribosyltransferase diphtheria toxin-like 1, ADPRT, PARP1, NAD(+) ADP-ribosyltransferase 1, ARTD1
Purification	Protein A/G purified from cell culture supernatant.
Endotoxin level	Please contact with the lab for this information.
Accession	P09874

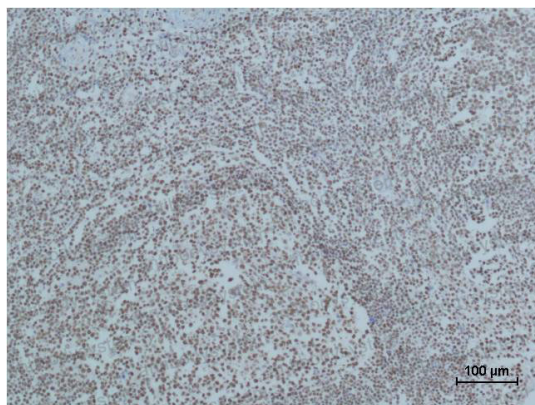
Stability and Storage

Use a manual defrost freezer and avoid repeated freeze-thaw cycles.

Store at 4°C short term (1-2 weeks). Store at -20°C 12 months. Store at -80°C long term.

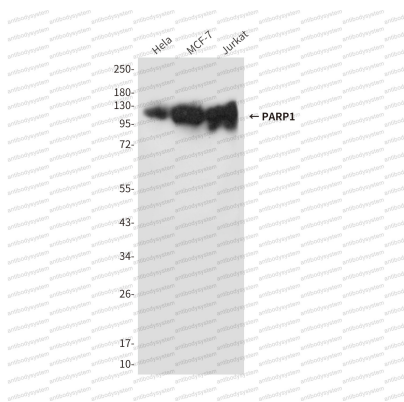
Note

For research use only.

Data Image

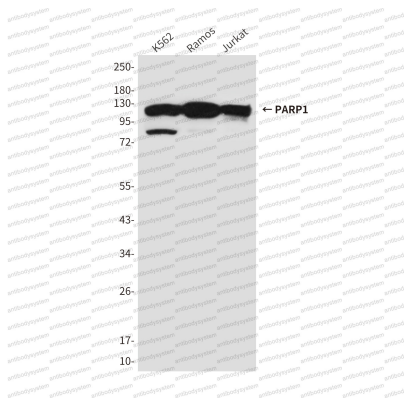
Immunohistochemical

Immunohistochemistry analysis of paraffin-embedded Human Tonsil Tissue using Cleaved PARP antibody. High-pressure and temperature Sodium Citrate pH 6.0 was used for antigen retrieval.



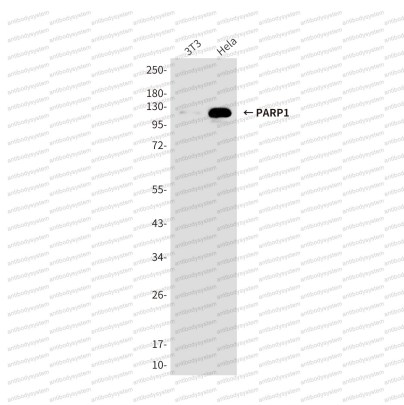
Western blot

Western blot analysis of PARP1 in HeLa, MCF-7 and Jurkat lysates using PARP antibody.



Western blot

Western blot analysis of PARP1 in K562, Ramos, Jurkat lysates using PARP (1C2) antibody.



Western blot

Western blot analysis of PARP1 in 3T3, HeLa lysates using PARP1 antibody