

Anti-GSTM1 Antibody (R3B61)

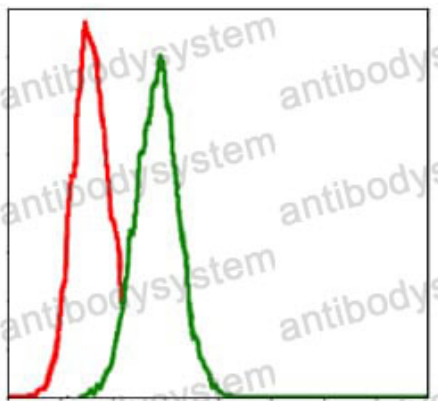
Summary

Catalog No.	RHC41003
Clone ID	R3B61
Host species	Mouse
Tested applications	ELISA: 1:10000, FCM: 1:200-1:400, IHC: 1:200-1:1000, WB: 1:500-1:2000
Species reactivity	Human, Rat
Form	Liquid
Storage buffer	0.01M PBS, pH 7.4, 0.05% Sodium Azide.
Concentration	1 mg/ml
Purity	>95% as determined by SDS-PAGE.
Clonality	Monoclonal
Isotype	IgG1
Applications	ELISA, FCM, IHC, WB
Target	GST1, GTH4, GSTM1-1, GSTM1a-1a, GSTM1b-1b, GST HB subunit 4, Glutathione S-transferase Mu 1, GSTM1, GST class-mu 1
Purification	Protein A/G purified from cell culture supernatant.
Endotoxin level	Please contact with the lab for this information.
Accession	P09488
Stability and Storage	Use a manual defrost freezer and avoid repeated freeze-thaw cycles. Store at 4°C short term (1-2 weeks). Store at -20°C 12 months. Store at -80°C long term.

Note

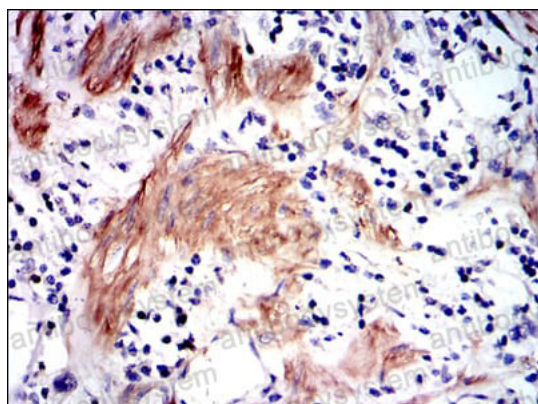
For research use only.

Data Image



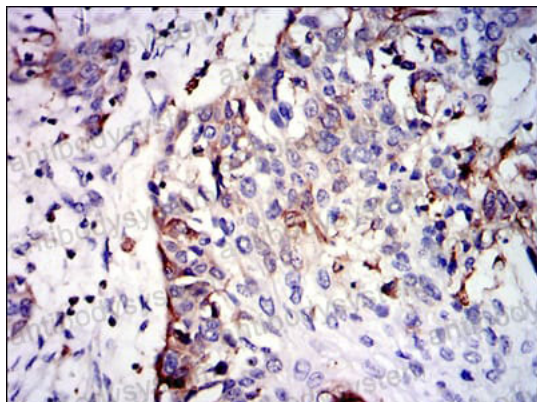
Flow Cytometry

Flow cytometric analysis of Hela cells using GSTM1 mouse mAb (green) and negative control (red).



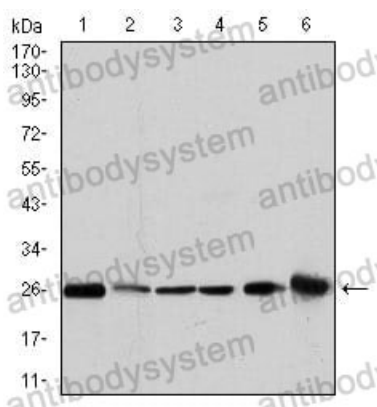
Immunohistochemical

Immunohistochemical analysis of paraffin-embedded human stomach cancer tissues using GSTM1 mouse mAb with DAB staining.



Immunohistochemical

Immunohistochemical analysis of paraffin-embedded human esophageal cancer tissues using GSTM1 mouse mAb with DAB staining.



Western blot

Western blot analysis using GSTM1 mouse mAb against MCF-7 (1), PC-12 (2), Jurkat (3), Hela (4), HL7702 (5) and HepG2 (6) cell lysate.