

# Anti-Gal1/LGALS1 Antibody (R3B59)

## Summary

---

<b>Catalog No.</b>	RHC40105
<b>Clone ID</b>	R3B59
<b>Host species</b>	Mouse
<b>Tested applications</b>	ELISA: 1:10000, FCM: 1:200-1:400, IHC: 1:200-1:1000
<b>Species reactivity</b>	Human
<b>Form</b>	Liquid
<b>Storage buffer</b>	0.01M PBS, pH 7.4, 0.05% Sodium Azide.
<b>Concentration</b>	1 mg/ml
<b>Purity</b>	>95% as determined by SDS-PAGE.
<b>Clonality</b>	Monoclonal
<b>Isotype</b>	IgG1
<b>Applications</b>	ELISA, FCM, IHC
<b>Target</b>	HLBP14, Lactose-binding lectin 1, LGALS1, HBL, HPL, Beta-galactoside-binding lectin L-14-I, Gal-1, Lectin galactoside-binding soluble 1, Putative MAPK-activating protein PM12, S-Lac lectin 1, Galaptin, Galectin-1, 14 kDa laminin-binding protein, 14 kDa lectin
<b>Purification</b>	Protein A/G purified from cell culture supernatant.
<b>Endotoxin level</b>	Please contact with the lab for this information.
<b>Accession</b>	P09382

**Stability and Storage**

Use a manual defrost freezer and avoid repeated freeze-thaw cycles.

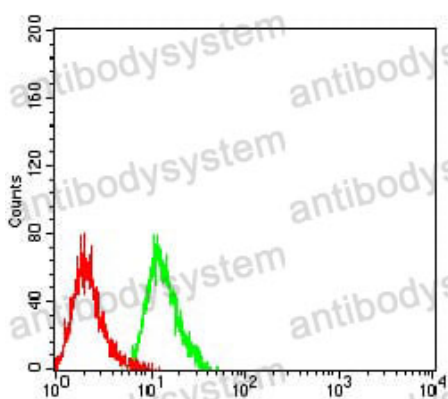
Store at 4°C short term (1-2 weeks). Store at -20°C 12 months. Store at -80°C long term.

**Note**

For research use only.

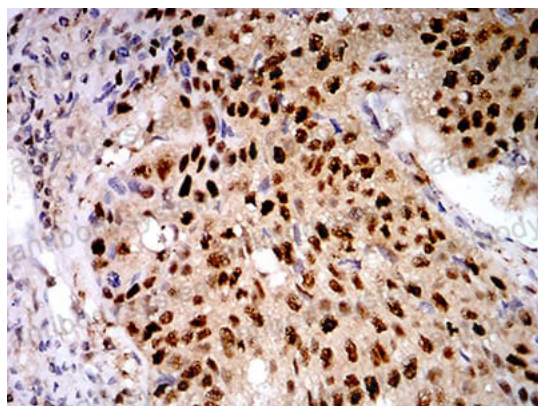
**Data Image**

---



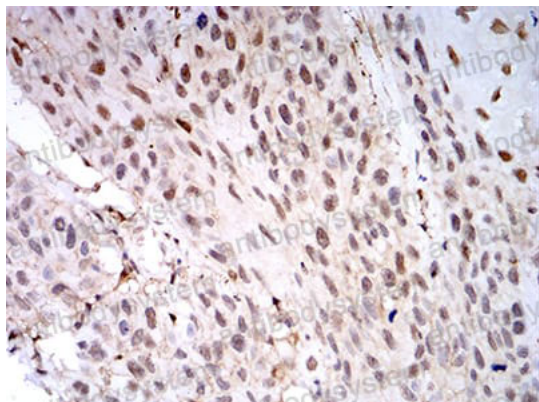
Flow Cytometry

Flow cytometric analysis of Hela cells using LGALS1 mouse mAb (green) and negative control (red).



Immunohistochemical

Immunohistochemical analysis of paraffin-embedded human lung cancer tissues using LGALS1 mouse mAb with DAB staining.



Immunohistochemical

Immunohistochemical analysis of paraffin-embedded human esophageal cancer tissues using LGALS1 mouse mAb with DAB staining.