

Anti-GSTP1 Antibody (R3B56)

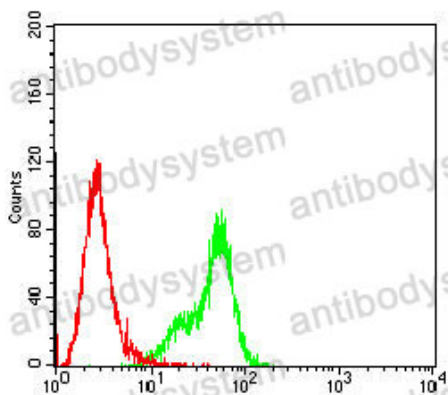
Summary

| | |
|------------------------------|-----------------------------------------------------------------------------------------------------------------------------------------------------------------|
| Catalog No. | RHC39303 |
| Clone ID | R3B56 |
| Host species | Mouse |
| Tested applications | ELISA: 1:10000, FCM: 1:200-1:400, IF: 1:200-1:1000, IHC: 1:200-1:1000, WB: 1:500-1:2000 |
| Species reactivity | Human |
| Form | Liquid |
| Storage buffer | 0.01M PBS, pH 7.4, 0.05% Sodium Azide. |
| Concentration | 1 mg/ml |
| Purity | >95% as determined by SDS-PAGE. |
| Clonality | Monoclonal |
| Isotype | IgG1 |
| Applications | ELISA, FCM, IF, IHC, WB |
| Target | GSTP1-1, FAES3, GSTP1, GST3, GST class-pi, Glutathione S-transferase P |
| Purification | Protein A/G purified from cell culture supernatant. |
| Endotoxin level | Please contact with the lab for this information. |
| Accession | P09211 |
| Stability and Storage | Use a manual defrost freezer and avoid repeated freeze-thaw cycles. Store at 4°C short term (1-2 weeks). Store at -20°C 12 months. Store at -80°C long term. |

Note

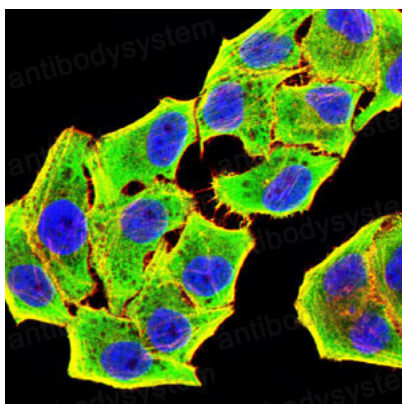
For research use only.

Data Image



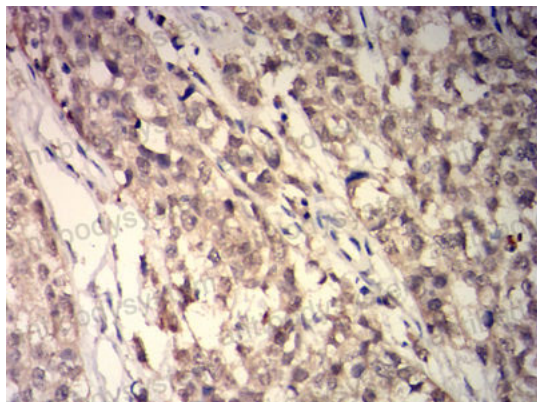
Flow Cytometry

Flow cytometric analysis of Hela cells using GSTP1 mouse mAb (green) and negative control (red).



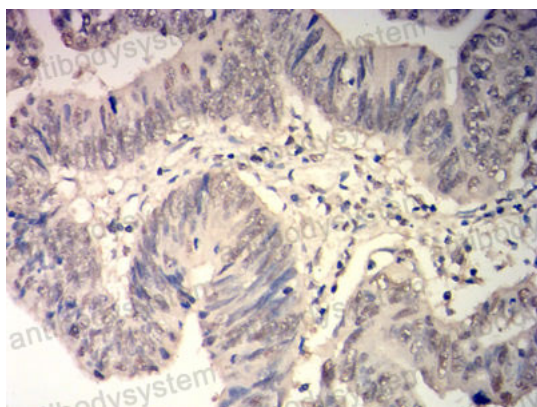
Immunofluorescence

Immunofluorescence analysis of Hela cells using GSTP1 mouse mAb (green). Blue: DRAQ5 fluorescent DNA dye. Red: Actin filaments have been labeled with Alexa Fluor- 555 phalloidin.



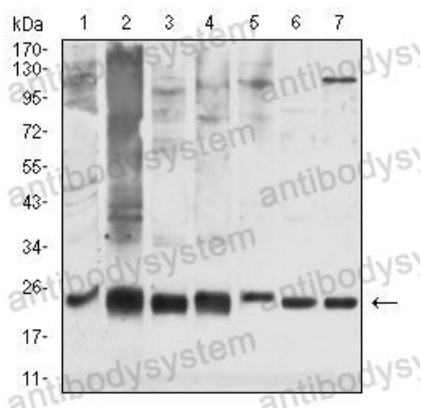
Immunohistochemical

Immunohistochemical analysis of paraffin-embedded human cervical cancer tissues using GSTP1 mouse mAb with DAB staining.



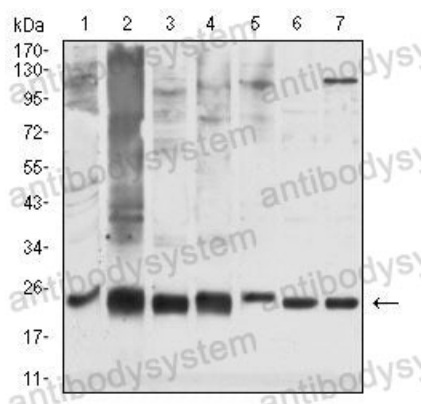
Immunohistochemical

Immunohistochemical analysis of paraffin-embedded human rectal cancer tissues using GSTP1 mouse mAb with DAB staining.



Western blot

Western blot analysis using GSTP1 mouse mAb against PC-3 (1), K562 (2), Hela (3), Jurkat (4), MOLT-4 (5), HCT116 (6), and A431 (7) cell lysate.



Western blot

Western blot analysis using GSTP1 mouse mAb against PC-3 (1), K562 (2), HeLa (3), Jurkat (4), MOLT-4 (5), HCT116 (6), and A431 (7) cell lysate.