

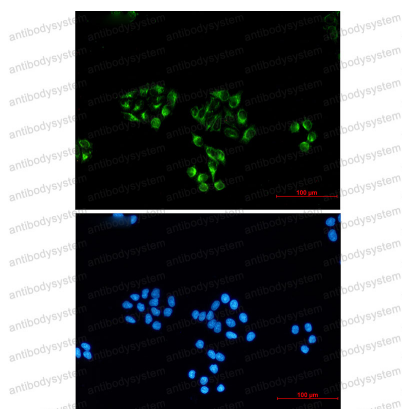
Anti-ENO2/NSE Antibody (R3B53)

Summary

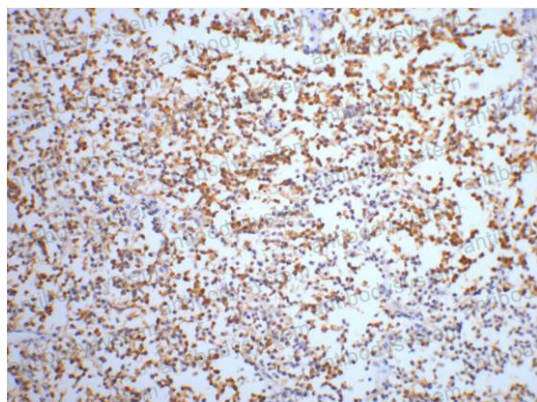
Catalog No.	RHC38605
Clone ID	R3B53
Host species	Mouse
Tested applications	IF: 1:50-1:200, IHC: 1:50-1:100, WB: 1:500-1:1000
Species reactivity	Human, Mouse, Rat
Form	Liquid
Storage buffer	0.01M PBS, pH 7.4, 0.5% BSA, 0.05% Sodium Azide and 50% Glycerol.
Concentration	1 mg/ml
Purity	>95% as determined by SDS-PAGE.
Clonality	Monoclonal
Isotype	IgG1
Applications	IF, IHC, WB
Target	2-phospho-D-glycerate hydro-lyase, NSE, ENO2, Neural enolase, Gamma-enolase, Neuron-specific enolase, Enolase 2
Purification	Protein A/G purified from cell culture supernatant.
Endotoxin level	Please contact with the lab for this information.
Accession	P09104
Stability and Storage	Use a manual defrost freezer and avoid repeated freeze-thaw cycles. Store at 4°C short term (1-2 weeks). Store at -20°C 12 months. Store at -80°C long term.

Note

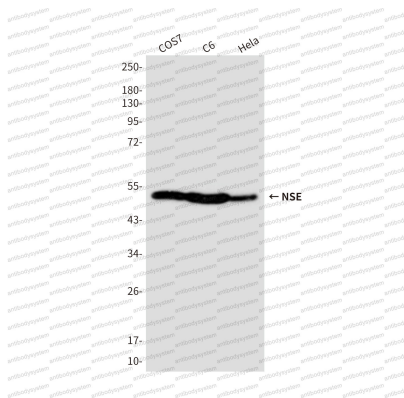
For research use only.

Data Image**Immunofluorescence**

Immunocytochemistry analysis of NSE (green) in Hela using NSE antibody ,and DAPI(blue)

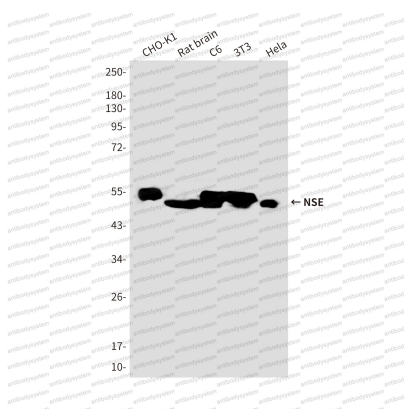
**Immunohistochemical**

Immunohistochemistry analysis of paraffin-embedded Human small cell carcinoma of lung tissue using NSE antibody.High-pressure and temperature Sodium Citrate pH 6.0 was used for antigen retrieval.



Western blot

Western blot analysis of Enolase2 in COS7, C6 and HeLa lysates using Enolase2 antibody.



Western blot

Western blot analysis of NSE in Enolase in CHO-K1, rat brain, C6, 3T3, HeLa lysates using Enolase antibody.