

Anti-ENO2/NSE Antibody (R3B52)

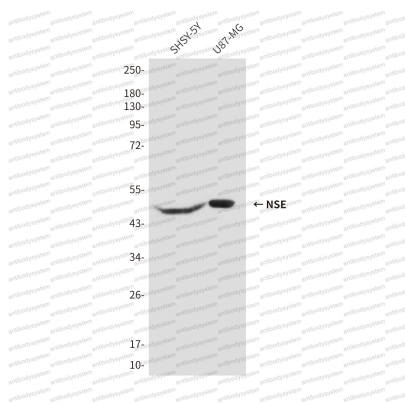
Summary

Catalog No.	RHC38604
Clone ID	R3B52
Host species	Mouse
Tested applications	ELISA: 1:10000, WB: 1:500-1:1000
Species reactivity	Human, Mouse, Rat
Form	Liquid
Storage buffer	0.01M PBS, pH 7.4, 0.5% BSA, 0.05% Sodium Azide and 50% Glycerol.
Concentration	1 mg/ml
Purity	>95% as determined by SDS-PAGE.
Clonality	Monoclonal
Isotype	IgG1
Applications	ELISA, WB
Target	2-phospho-D-glycerate hydro-lyase, NSE, ENO2, Neural enolase, Gamma-enolase, Neuron-specific enolase, Enolase 2
Purification	Protein A/G purified from cell culture supernatant.
Endotoxin level	Please contact with the lab for this information.
Accession	P09104
Stability and Storage	Use a manual defrost freezer and avoid repeated freeze-thaw cycles. Store at 4°C short term (1-2 weeks). Store at -20°C 12 months. Store at -80°C long term.

Note

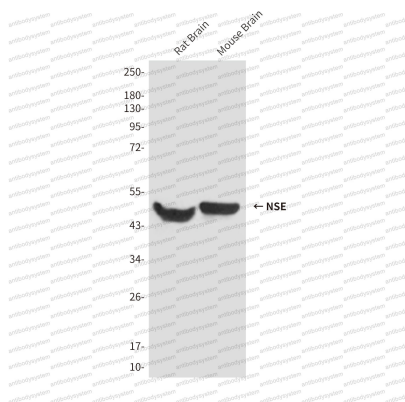
For research use only.

Data Image



Western blot

Western blot analysis of Enolase2 in SH-SY5Y and U87-MG lysates using Enolase2 antibody.



Western blot

Western blot analysis of NSE in rat Brain and mouse Brain lysates using Enolase2 antibody.