

# Anti-ENO2/NSE Antibody (R3B51)

## Summary

---

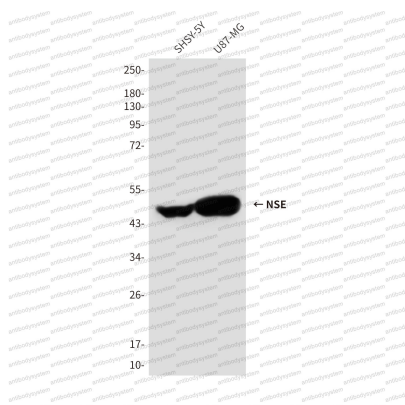
|                              |   |
|------------------------------|---|
| <b>Catalog No.</b>           | RHC38603  |
| <b>Clone ID</b>              | R3B51   |
| <b>Host species</b>          | Mouse   |
| <b>Tested applications</b>   | ELISA: 1:10000, WB: 1:500-1:1000  |
| <b>Species reactivity</b>    | Human, Mouse, Rat   |
| <b>Form</b>                  | Liquid  |
| <b>Storage buffer</b>        | 0.01M PBS, pH 7.4, 0.5% BSA, 0.05% Sodium Azide and 50% Glycerol.   |
| <b>Concentration</b>         | 1 mg/ml   |
| <b>Purity</b>                | >95% as determined by SDS-PAGE.   |
| <b>Clonality</b>             | Monoclonal  |
| <b>Isotype</b>               | IgG1  |
| <b>Applications</b>          | ELISA, WB   |
| <b>Target</b>                | 2-phospho-D-glycerate hydro-lyase, NSE, ENO2, Neural enolase, Gamma-enolase, Neuron-specific enolase, Enolase 2   |
| <b>Purification</b>          | Protein A/G purified from cell culture supernatant.   |
| <b>Endotoxin level</b>       | Please contact with the lab for this information.   |
| <b>Accession</b>             | P09104  |
| <b>Stability and Storage</b> | Use a manual defrost freezer and avoid repeated freeze-thaw cycles.<br>Store at 4°C short term (1-2 weeks). Store at -20°C 12 months. Store at -80°C long term. |

**Note**

For research use only.

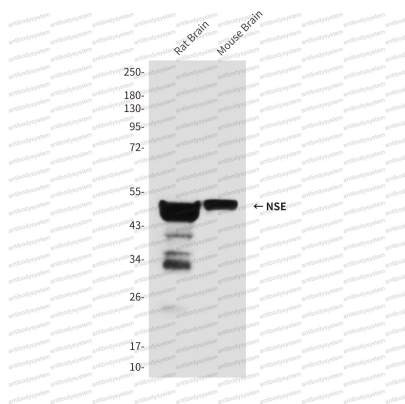
## Data Image

---



Western blot

Western blot analysis of Enolase2 in SH-SY5Y and U87-MG lysates using Enolase2 antibody.



Western blot

Western blot analysis of NSE in rat Brain and mouse Brain lysates using Enolase2 antibody.