

Anti-ENO2/NSE Antibody (R3B50)

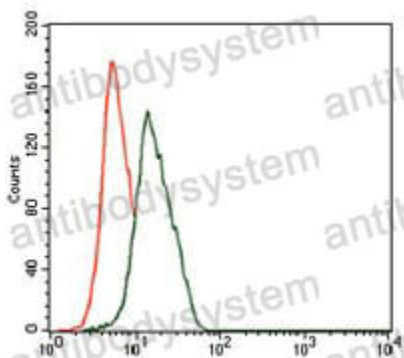
Summary

Catalog No.	RHC38602
Clone ID	R3B50
Host species	Mouse
Tested applications	ELISA: 1:10000, FCM: 1:200-1:400, IHC: 1:200-1:1000, WB: 1:500-1:2000
Species reactivity	Human, Mouse
Form	Liquid
Storage buffer	0.01M PBS, pH 7.4, 0.05% Sodium Azide.
Concentration	1 mg/ml
Purity	>95% as determined by SDS-PAGE.
Clonality	Monoclonal
Isotype	IgG1
Applications	ELISA, FCM, IHC, WB
Target	2-phospho-D-glycerate hydro-lyase, NSE, ENO2, Neural enolase, Gamma-enolase, Neuron-specific enolase, Enolase 2
Purification	Protein A/G purified from cell culture supernatant.
Endotoxin level	Please contact with the lab for this information.
Accession	P09104
Stability and Storage	Use a manual defrost freezer and avoid repeated freeze-thaw cycles. Store at 4°C short term (1-2 weeks). Store at -20°C 12 months. Store at -80°C long term.

Note

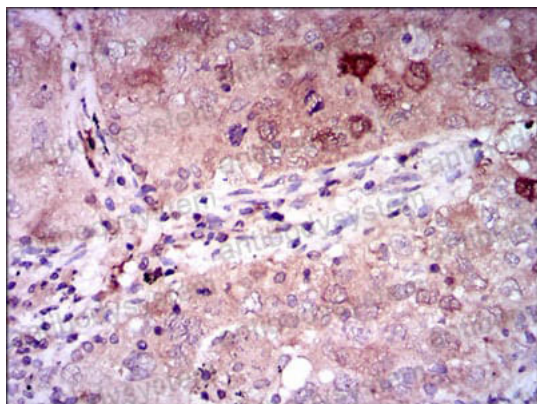
For research use only.

Data Image



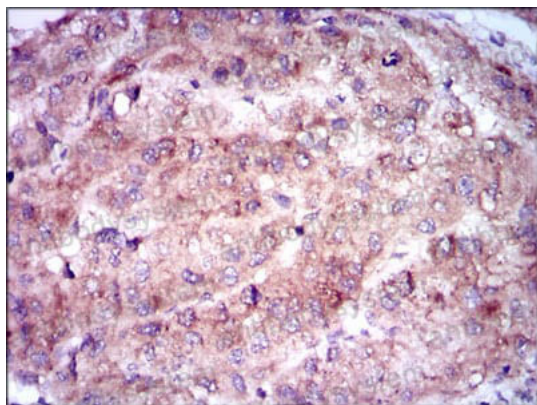
Flow Cytometry

Flow cytometric analysis of HeLa cells using ENO2 mouse mAb (green) and negative control (red).



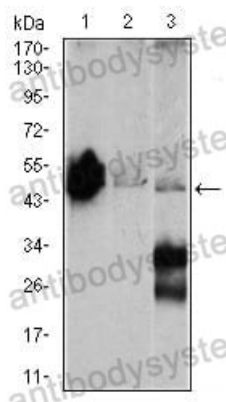
Immunohistochemical

Immunohistochemical analysis of paraffin-embedded human lung cancer tissues using ENO2 mouse mAb with DAB staining.



Immunohistochemical

Immunohistochemical analysis of paraffin-embedded human liver cancer tissues using ENO2 mouse mAb with DAB staining.



Western blot

Western blot analysis using ENO2 mouse mAb against Mouse brain (1), NIH3T3 (2), and C6 (3) cell lysate.