

Anti-KRT16 Antibody (R3B39)

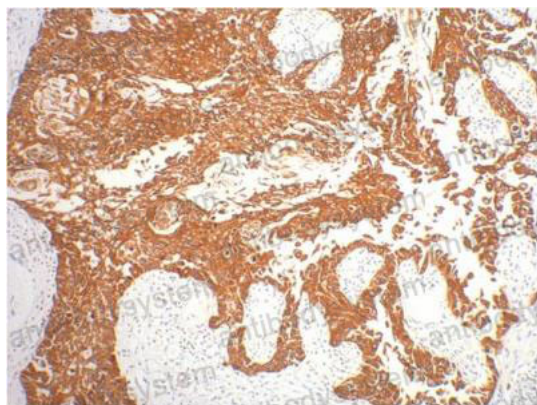
Summary

Catalog No.	RHC36403
Clone ID	R3B39
Host species	Mouse
Tested applications	IHC: 1:50-1:100, WB: 1:500-1:1000
Species reactivity	Human, Mouse, Rat
Form	Liquid
Storage buffer	0.01M PBS, pH 7.4, 0.5% BSA, 0.05% Sodium Azide and 50% Glycerol.
Concentration	1 mg/ml
Purity	>95% as determined by SDS-PAGE.
Clonality	Monoclonal
Isotype	IgG1
Applications	IHC, WB
Target	Keratin, type I cytoskeletal 16, KRT16A, Keratin-16, CK-16, Cytokeratin-16, KRT16, K16
Purification	Protein A/G purified from cell culture supernatant.
Endotoxin level	Please contact with the lab for this information.
Accession	P08779
Stability and Storage	Use a manual defrost freezer and avoid repeated freeze-thaw cycles. Store at 4°C short term (1-2 weeks). Store at -20°C 12 months. Store at -80°C long term.

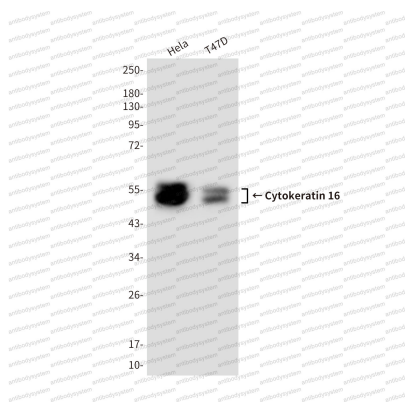
Note

For research use only.

Data Image

**Immunohistochemical**

Immunohistochemistry analysis of paraffin-embedded Human gullet cancer tissue using CK16 antibody. High-pressure and temperature Sodium Citrate pH 6.0 was used for antigen retrieval.

**Western blot**

Western blot analysis of Cytokeratin 16 in T47D and HeLa lysates using Cytokeratin 16 antibody.