

Anti-KRT7 Antibody (R3B36)

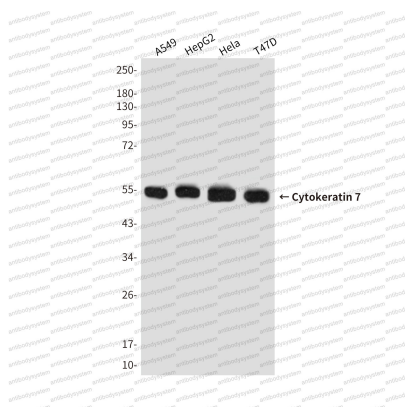
Summary

Catalog No.	RHC36104
Clone ID	R3B36
Host species	Mouse
Tested applications	IF: 1:50-1:200, WB: 1:500-1:1000
Species reactivity	Human
Form	Liquid
Storage buffer	0.01M PBS, pH 7.4, 0.5% BSA, 0.05% Sodium Azide and 50% Glycerol.
Concentration	1 mg/ml
Purity	>95% as determined by SDS-PAGE.
Clonality	Monoclonal
Isotype	IgG2b
Applications	IF, WB
Target	Cytokeratin-7, Keratin-7, Type-II keratin Kb7, SCL, CK-7, Sarcolectin, KRT7, K7, Keratin, type II cytoskeletal 7
Purification	Protein A/G purified from cell culture supernatant.
Endotoxin level	Please contact with the lab for this information.
Accession	P08729
Stability and Storage	Use a manual defrost freezer and avoid repeated freeze-thaw cycles. Store at 4°C short term (1-2 weeks). Store at -20°C 12 months. Store at -80°C long term.

Note

For research use only.

Data Image



Western blot

Western blot analysis of Keratin 7(Cterminus) in A549, HepG2, Hela and T47D lysates using Keratin 7(Cterminus) antibody.