

Anti-KRT7 Antibody (R3B35)

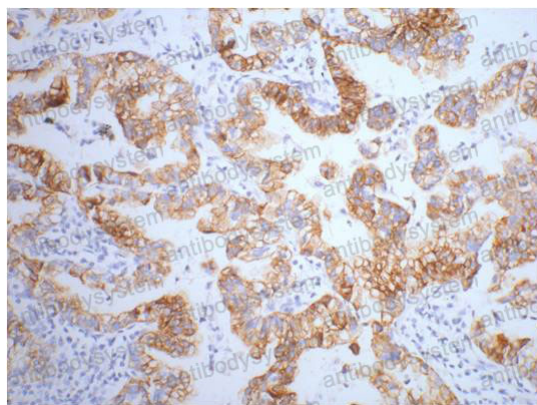
Summary

Catalog No.	RHC36103
Clone ID	R3B35
Host species	Mouse
Tested applications	IF: 1:50-1:200, IHC: 1:50-1:100, IP: 1:20, WB: 1:500-1:1000
Species reactivity	Human, Mouse, Rat
Form	Liquid
Storage buffer	0.01M PBS, pH 7.4, 0.5% BSA, 0.05% Sodium Azide and 50% Glycerol.
Concentration	1 mg/ml
Purity	>95% as determined by SDS-PAGE.
Clonality	Monoclonal
Isotype	IgG1
Applications	IF, IHC, IP, WB
Target	Cytokeratin-7, Keratin-7, Type-II keratin Kb7, SCL, CK-7, Sarcolectin, KRT7, K7, Keratin, type II cytoskeletal 7
Purification	Protein A/G purified from cell culture supernatant.
Endotoxin level	Please contact with the lab for this information.
Accession	P08729
Stability and Storage	Use a manual defrost freezer and avoid repeated freeze-thaw cycles. Store at 4°C short term (1-2 weeks). Store at -20°C 12 months. Store at -80°C long term.

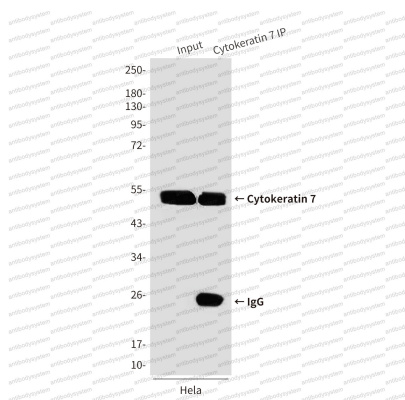
Note

For research use only.

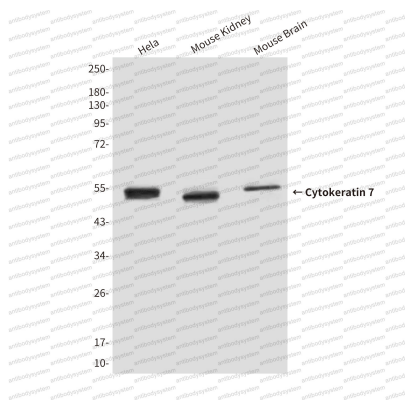
Data Image

**Immunohistochemical**

Immunohistochemistry analysis of paraffin-embedded Human lung cancer tissue using Cytokeratin 7 antibody. High-pressure and temperature Sodium Citrate pH 6.0 was used for antigen retrieval.

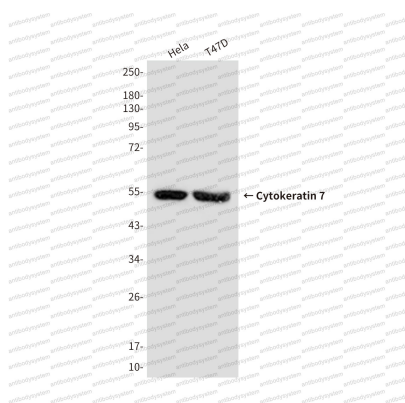
**Immunoprecipitation**

Immunoprecipitation analysis of Cytokeratin 7 in Hela lysates using Cytokeratin 7 antibody



Western blot

Western blot analysis of Cytokeratin 7 in HeLa, mouse Kidney, mouse Brain using Cytokeratin 7 antibody.



Western blot

Western blot analysis of Cytokeratin 7 in T47D and HeLa lysates using Cytokeratin 7 antibody