

Anti-KRT19/CK19 Antibody (R3B28)

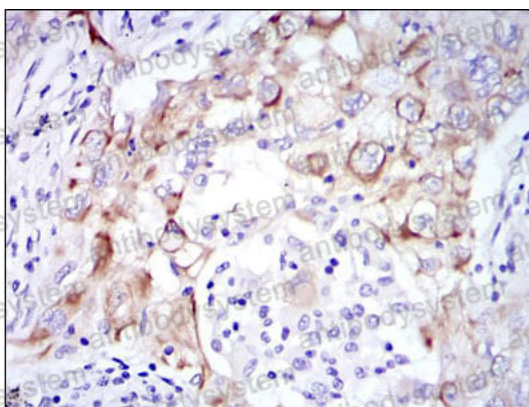
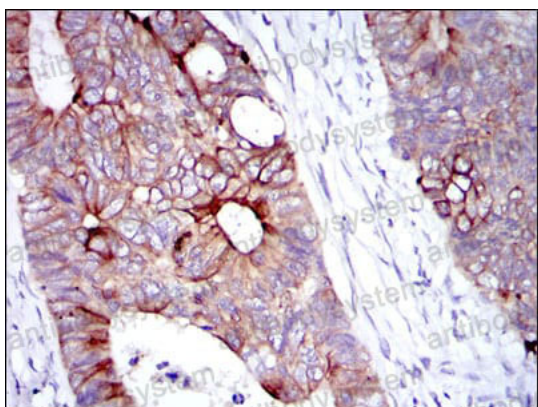
Summary

Catalog No.	RHC36005
Clone ID	R3B28
Host species	Mouse
Tested applications	ELISA: 1:10000, IHC: 1:200-1:1000, WB: 1:500-1:2000
Species reactivity	Human
Form	Liquid
Storage buffer	0.01M PBS, pH 7.4, 0.05% Sodium Azide.
Concentration	1 mg/ml
Purity	>95% as determined by SDS-PAGE.
Clonality	Monoclonal
Isotype	IgG1
Applications	ELISA, IHC, WB
Target	CK-19, Cytokeratin-19, K19, KRT19, Keratin-19, Keratin, type I cytoskeletal 19
Purification	Protein A/G purified from cell culture supernatant.
Endotoxin level	Please contact with the lab for this information.
Accession	P08727
Stability and Storage	Use a manual defrost freezer and avoid repeated freeze-thaw cycles. Store at 4°C short term (1-2 weeks). Store at -20°C 12 months. Store at -80°C long term.

Note

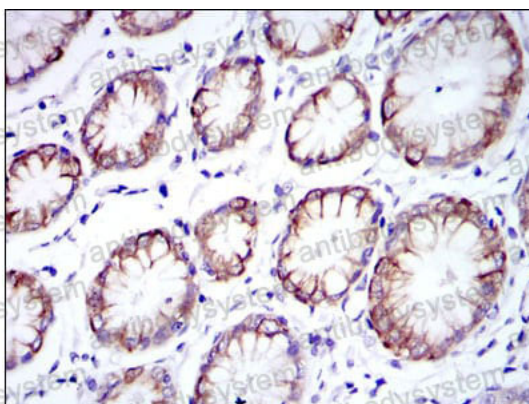
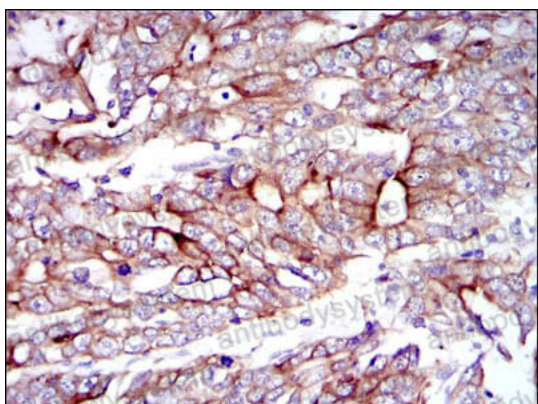
For research use only.

Data Image



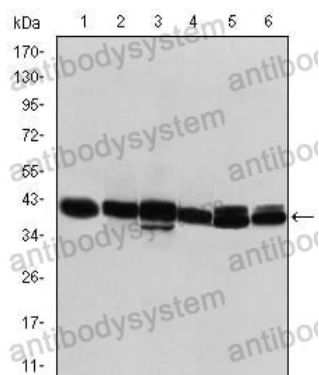
Immunohistochemical analysis of paraffin-embedded human rectum cancer tissues (left) and lung cancer tissues (right) using KRT19 mouse mAb with DAB staining.

Immunohistochemical



Immunohistochemical analysis of paraffin-embedded human stomach cancer tissues (left) and stomach tissues (right) using KRT19 mouse mAb with DAB staining.

Immunohistochemical



Western blot

Western blot analysis using KRT19 mouse mAb against T47D (1), MCF-7 (2), SKBR-3 (3), HepG2 (4), Caco-2 (5) and SW620 (6) cell lysate.