

# Anti-KRT19/CK19 Antibody (R3B27)

## Summary

---

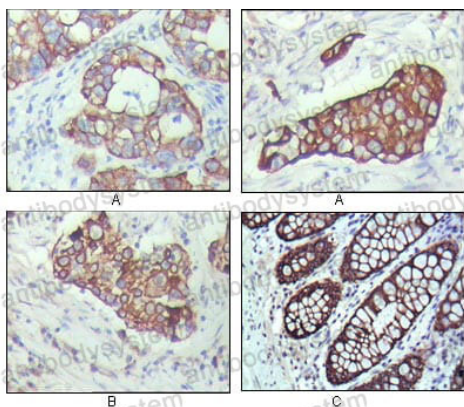
<b>Catalog No.</b>	RHC36004
<b>Clone ID</b>	R3B27
<b>Host species</b>	Mouse
<b>Tested applications</b>	IHC: 1:200-1:1000
<b>Species reactivity</b>	Human
<b>Form</b>	Liquid
<b>Storage buffer</b>	0.01M PBS, pH 7.4, 0.05% Sodium Azide.
<b>Concentration</b>	1 mg/ml
<b>Purity</b>	>95% as determined by SDS-PAGE.
<b>Clonality</b>	Monoclonal
<b>Isotype</b>	IgG1
<b>Applications</b>	IHC
<b>Target</b>	CK-19, Cytokeratin-19, K19, KRT19, Keratin-19, Keratin, type I cytoskeletal 19
<b>Purification</b>	Protein A/G purified from cell culture supernatant.
<b>Endotoxin level</b>	Please contact with the lab for this information.
<b>Accession</b>	P08727
<b>Stability and Storage</b>	Use a manual defrost freezer and avoid repeated freeze-thaw cycles. Store at 4°C short term (1-2 weeks). Store at -20°C 12 months. Store at -80°C long term.

**Note**

For research use only.

**Data Image**

---



Immunohistochemical analysis of paraffin-embedded human breast carcinoma(A), lung cancer(B) and normal colon tissue(C), showing cytoplasmic localization with DAB staining using KRT19 mouse mAb.

Immunohistochemical