

Anti-CYP3A4 Antibody (R3B24)

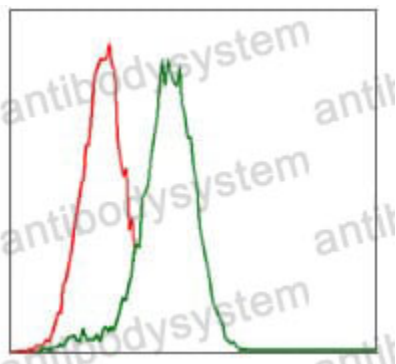
Summary

Catalog No.	RHC35402
Clone ID	R3B24
Host species	Mouse
Tested applications	ELISA: 1:10000, FCM: 1:200-1:400, IF: 1:50-1:500, IHC: 1:100-1:500, WB: 1:500-1:2000
Species reactivity	Human, Mouse, Rat
Form	Liquid
Storage buffer	0.01M PBS, pH 7.4, 0.05% Sodium Azide.
Concentration	1 mg/ml
Purity	>95% as determined by SDS-PAGE.
Clonality	Monoclonal
Isotype	IgG1
Applications	ELISA, FCM, IF, IHC, WB
Target	CYP3A3, Cytochrome P450 3A4, 1,4-cineole 2-exo-monooxygenase, CYP3A4, Cytochrome P450 3A3, Cytochrome P450 NF-25, Cytochrome P450-PCN1, CYP3A4, 1,8-cineole 2-exo-monooxygenase, Albendazole monooxygenase (sulfoxide-forming), Nifedipine oxidase, Quinine 3-monooxygenase, CYP3A3, Cholesterol 25-hydroxylase, Cytochrome P450 H1p, Albendazole sulfoxidase
Purification	Protein A/G purified from cell culture supernatant.
Endotoxin level	Please contact with the lab for this information.

Recombinant Proteins & Antibodies

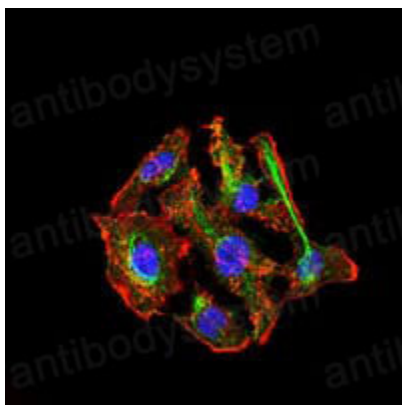
Accession P08684**Stability and Storage** Use a manual defrost freezer and avoid repeated freeze-thaw cycles.
Store at 4°C short term (1-2 weeks). Store at -20°C 12 months. Store at -80°C long term.**Note** For research use only.

Data Image



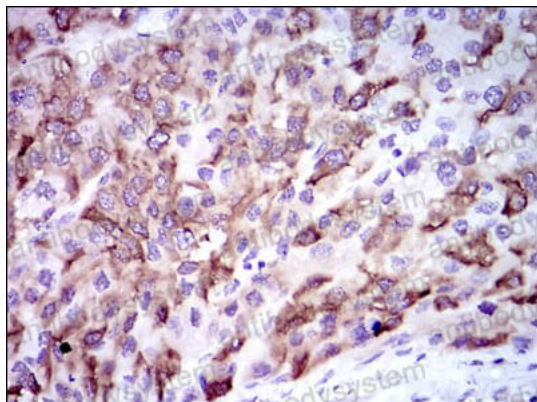
Flow Cytometry

Flow cytometric analysis of HepG2 cells using CYP3A4 mouse mAb (green) and negative control (red).



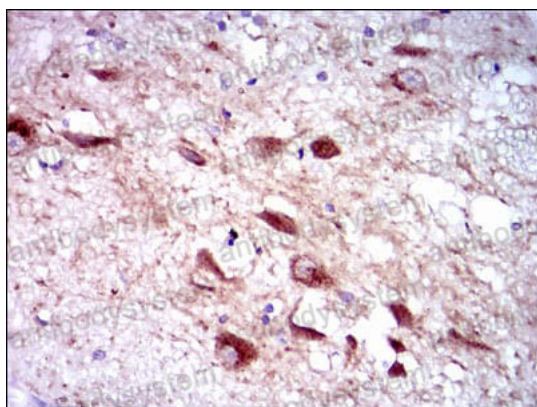
Immunofluorescence

Immunofluorescence analysis of HepG2 cells using CYP3A4 mouse mAb (green). Blue: DRAQ5 fluorescent DNA dye. Red: Actin filaments have been labeled with Alexa Fluor-555 phalloidin.



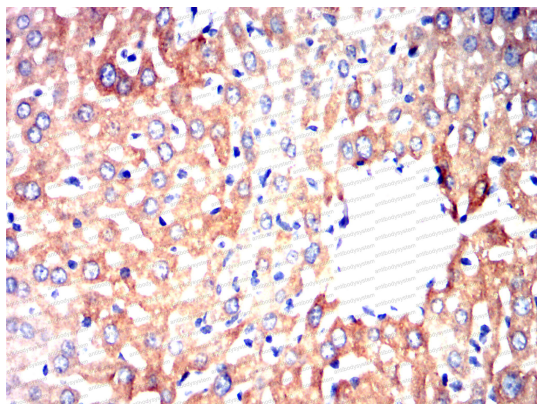
Immunohistochemical

Immunohistochemical analysis of paraffin-embedded human liver cancer tissues using CYP3A4 mouse mAb with DAB staining.



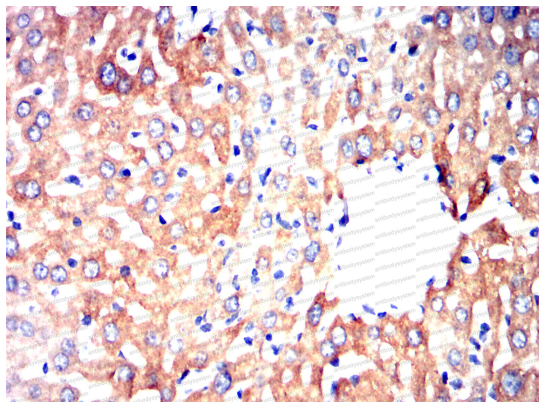
Immunohistochemical

Immunohistochemical analysis of paraffin-embedded human brain tissues using CYP3A4 mouse mAb with DAB staining.



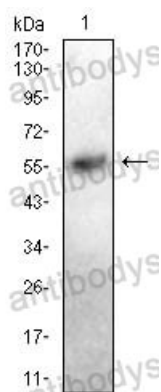
Immunohistochemical

Immunohistochemical analysis of paraffin-embedded Mouse liver using CYP3A4 mouse mAb with DAB staining.



Immunohistochemical

Immunohistochemical analysis of paraffin-embedded Mouse liver using CYP3A4 mouse mAb with DAB staining.



Western blot

Western blot analysis using CYP3A4 mouse mAb against Rat liver cell lysate.