

# Anti-CD49e/ITGA5 Antibody (R3B15)

## Summary

---

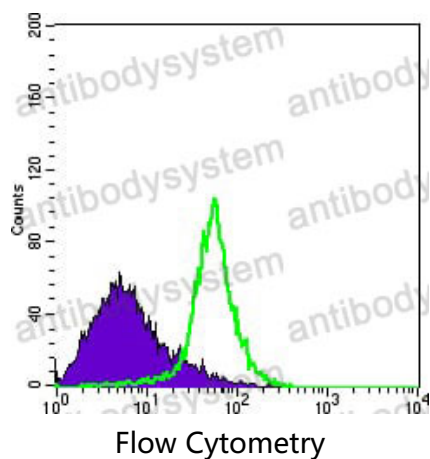
<b>Catalog No.</b>	RHC35103
<b>Clone ID</b>	R3B15
<b>Host species</b>	Mouse
<b>Tested applications</b>	FCM: 1:200-1:400, IHC: 1:200-1:1000
<b>Species reactivity</b>	Human
<b>Form</b>	Liquid
<b>Storage buffer</b>	0.01M PBS, pH 7.4, 0.05% Sodium Azide.
<b>Concentration</b>	1 mg/ml
<b>Purity</b>	>95% as determined by SDS-PAGE.
<b>Clonality</b>	Monoclonal
<b>Isotype</b>	IgG2a
<b>Applications</b>	FCM, IHC
<b>Target</b>	CD49 antigen-like family member E, Integrin alpha-F, ITGA5, VLA-5, Fibronectin receptor subunit alpha, CD49e, Integrin alpha-5, FNRA
<b>Purification</b>	Protein A/G purified from cell culture supernatant.
<b>Endotoxin level</b>	Please contact with the lab for this information.
<b>Accession</b>	P08648
<b>Stability and Storage</b>	Use a manual defrost freezer and avoid repeated freeze-thaw cycles. Store at 4°C short term (1-2 weeks). Store at -20°C 12 months. Store at -80°C long term.

Note

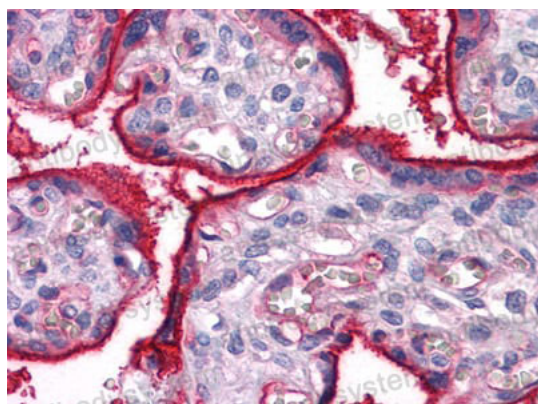
For research use only.

## Data Image

---



Flow cytometric analysis of Hela cells using ITGA5 mouse mAb (green) and negative control (purple).



Immunohistochemical analysis of paraffin-embedded human Placenta tissues using ITGA5 mouse mAb

Immunohistochemical