

# Anti-MYL3 Antibody (R3B11)

## Summary

---

<b>Catalog No.</b>	RHC34501
<b>Clone ID</b>	R3B11
<b>Host species</b>	Mouse
<b>Tested applications</b>	IHC: 1:200-1:1000, WB: 1:500-1:2000
<b>Species reactivity</b>	Human
<b>Form</b>	Liquid
<b>Storage buffer</b>	0.01M PBS, pH 7.4, 0.05% Sodium Azide.
<b>Concentration</b>	1 mg/ml
<b>Purity</b>	>95% as determined by SDS-PAGE.
<b>Clonality</b>	Monoclonal
<b>Isotype</b>	IgG1
<b>Applications</b>	IHC, WB
<b>Target</b>	Ventricular myosin alkali light chain, Ventricular/slow twitch myosin alkali light chain, MLC1SB, Myosin light chain 3, Ventricular myosin light chain 1, MYL3, Myosin light chain 1, slow-twitch muscle B/ventricular isoform, CMLC1, VLCL, MLC-IV/sb, Cardiac myosin light chain 1
<b>Purification</b>	Protein A/G purified from cell culture supernatant.
<b>Endotoxin level</b>	Please contact with the lab for this information.
<b>Accession</b>	P08590

**Stability and Storage**

Use a manual defrost freezer and avoid repeated freeze-thaw cycles.

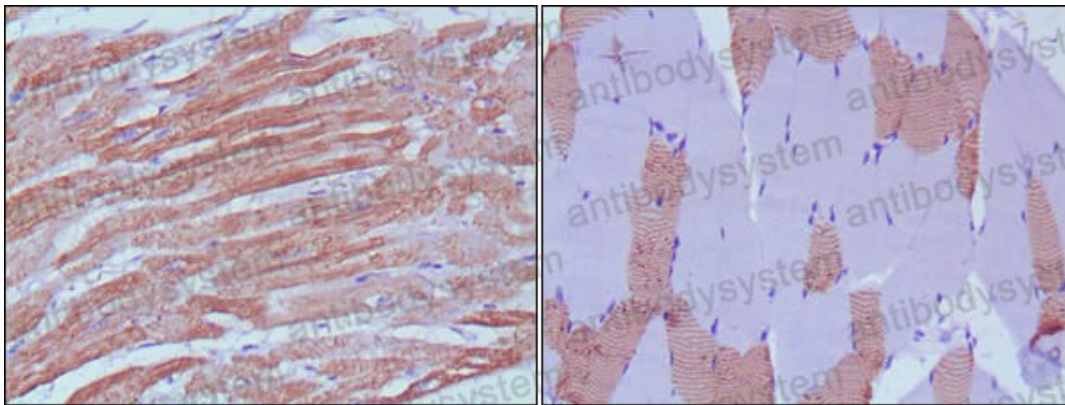
Store at 4°C short term (1-2 weeks). Store at -20°C 12 months. Store at -80°C long term.

**Note**

For research use only.

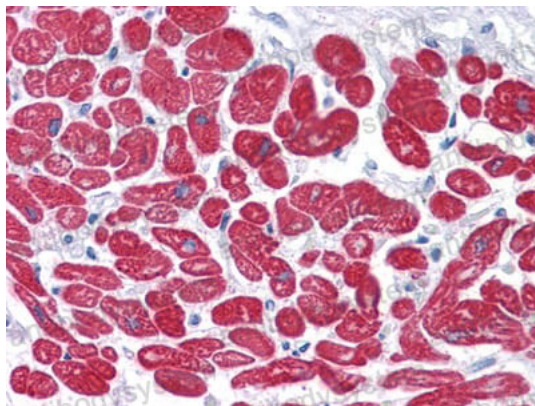
**Data Image**

---



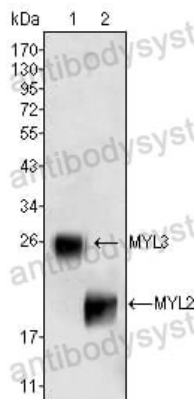
Immunohistochemical

Immunohistochemical analysis of paraffin-embedded human skeletal muscle (left) and cardiac muscle (right) using MYL3 mouse mAb with DAB staining.



Immunohistochemical

Immunohistochemical analysis of paraffin-embedded human Heart tissues using MYL3 mouse mAb.



Western blot

Western blot analysis using MYL3 (1) and MYL2 (2) mouse mAb against rat fetal heart tissues lysate.