

Anti-CD45/PTPRC Antibody (R3B06)

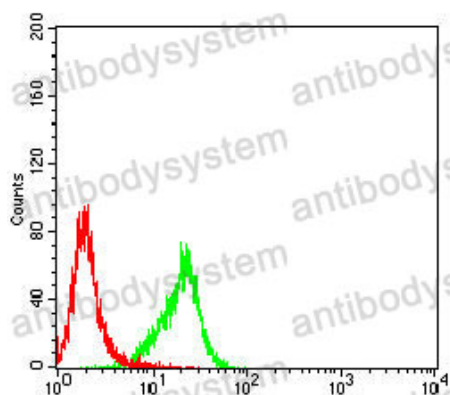
Summary

| | |
|------------------------------|---|
| Catalog No. | RHC34009 |
| Clone ID | R3B06 |
| Host species | Mouse |
| Tested applications | ELISA: 1:10000, FCM: 1:200-1:400, IHC: 1:200-1:1000 |
| Species reactivity | Human |
| Form | Liquid |
| Storage buffer | 0.01M PBS, pH 7.4, 0.05% Sodium Azide. |
| Concentration | 1 mg/ml |
| Purity | >95% as determined by SDS-PAGE. |
| Clonality | Monoclonal |
| Isotype | IgG2a |
| Applications | ELISA, FCM, IHC |
| Target | T200, Leukocyte common antigen, CD45, L-CA, Receptor-type tyrosine-protein phosphatase C, PTPRC |
| Purification | Protein A/G purified from cell culture supernatant. |
| Endotoxin level | Please contact with the lab for this information. |
| Accession | P08575 |
| Stability and Storage | Use a manual defrost freezer and avoid repeated freeze-thaw cycles. Store at 4°C short term (1-2 weeks). Store at -20°C 12 months. Store at -80°C long term. |

Note

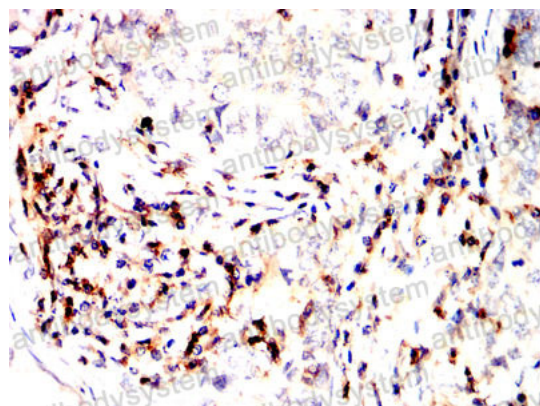
For research use only.

Data Image



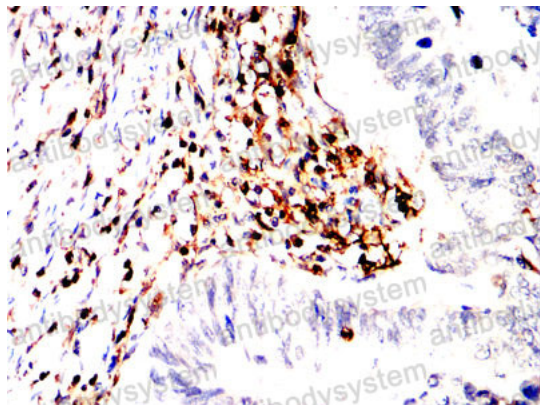
Flow Cytometry

Flow cytometric analysis of THP-1 cells using CD45R mouse mAb (green) and negative control (red).



Immunohistochemical

Immunohistochemical analysis of paraffin-embedded human lung cancer tissues using CD45R mouse mAb with DAB staining.



Immunohistochemical

Immunohistochemical analysis of paraffin-embedded human rectum cancer tissues using CD45R mouse mAb with DAB staining.