

Anti-PDHA1 Antibody (R3A91)

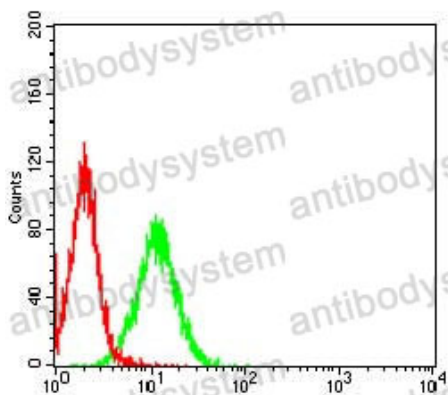
Summary

Catalog No.	RHC33502
Clone ID	R3A91
Host species	Mouse
Tested applications	ELISA: 1:10000, FCM: 1:200-1:400, WB: 1:500-1:2000
Species reactivity	Human
Form	Liquid
Storage buffer	0.01M PBS, pH 7.4, 0.05% Sodium Azide.
Concentration	1 mg/ml
Purity	>95% as determined by SDS-PAGE.
Clonality	Monoclonal
Isotype	IgG2b
Applications	ELISA, FCM, WB
Target	PHE1A, PDHE1-A type I, Pyruvate dehydrogenase E1 component subunit alpha, somatic form, mitochondrial, PDHA1
Purification	Protein A/G purified from cell culture supernatant.
Endotoxin level	Please contact with the lab for this information.
Accession	P08559
Stability and Storage	Use a manual defrost freezer and avoid repeated freeze-thaw cycles. Store at 4°C short term (1-2 weeks). Store at -20°C 12 months. Store at -80°C long term.

Note

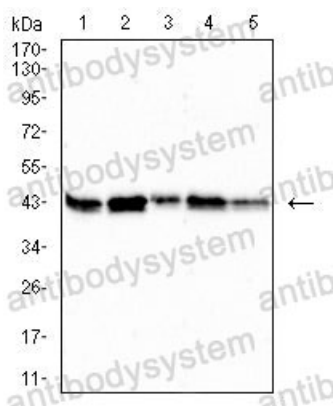
For research use only.

Data Image



Flow Cytometry

Flow cytometric analysis of Hela cells using PDHA1 mouse mAb (green) and negative control (red).



Western blot

Western blot analysis using PDHA1 mouse mAb against HepG2 (1), HL-60 (2), SK-OV-3 (3), PC-3 (4) and PANC-1 (5) cell lysate.