

Anti-CD10/MME Antibody (R3A77)

Summary

Catalog No.	RHC33006
Clone ID	R3A77
Host species	Mouse
Tested applications	ELISA: 1:10000, FCM: 1:200-1:400, WB: 1:500-1:2000
Species reactivity	Human
Form	Liquid
Storage buffer	0.01M PBS, pH 7.4, 0.05% Sodium Azide.
Concentration	1 mg/ml
Purity	>95% as determined by SDS-PAGE.
Clonality	Monoclonal
Isotype	IgG1
Applications	ELISA, FCM, WB
Target	Atriopeptidase, Common acute lymphocytic leukemia antigen, Neutral endopeptidase, Skin fibroblast elastase, CD10, SFE, CALLA, Neprilysin, Neutral endopeptidase 24.11, MME, NEP, Enkephalinase, EPN
Purification	Protein A/G purified from cell culture supernatant.
Endotoxin level	Please contact with the lab for this information.
Accession	P08473

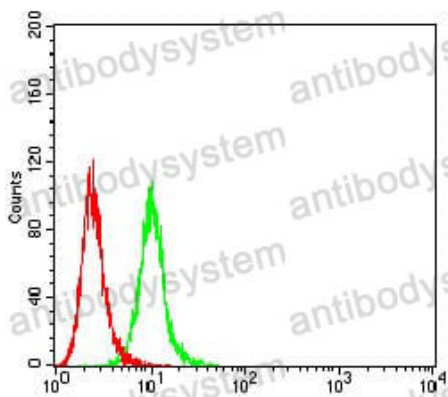
Stability and Storage

Use a manual defrost freezer and avoid repeated freeze-thaw cycles.

Store at 4°C short term (1-2 weeks). Store at -20°C 12 months. Store at -80°C long term.

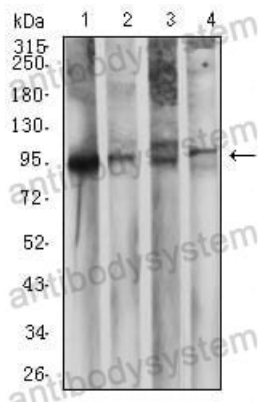
Note

For research use only.

Data Image

Flow Cytometry

Flow cytometric analysis of K562 cells using CD10 mouse mAb (green) and negative control (red).



Western blot

Western blot analysis using CD10 mouse mAb against LNCap (1), Ramos (2), Raji (3), and NTERA-2 (4) cell lysate.