

Anti-ELANE Antibody (R3A66)

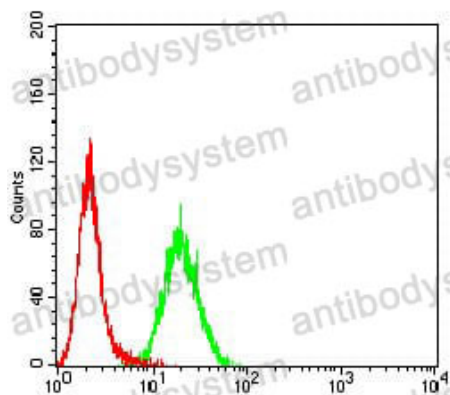
Summary

Catalog No.	RHC32101
Clone ID	R3A66
Host species	Mouse
Tested applications	ELISA: 1:10000, FCM: 1:200-1:400, IHC: 1:200-1:1000, WB: 1:500-1:2000
Species reactivity	Human, Monkey
Form	Liquid
Storage buffer	0.01M PBS, pH 7.4, 0.05% Sodium Azide.
Concentration	1 mg/ml
Purity	>95% as determined by SDS-PAGE.
Clonality	Monoclonal
Isotype	IgG1
Applications	ELISA, FCM, IHC, WB
Target	Medullasin, ELA2, ELANE, PMN elastase, Neutrophil elastase, HLE, Human leukocyte elastase, Elastase-2, Bone marrow serine protease
Purification	Protein A/G purified from cell culture supernatant.
Endotoxin level	Please contact with the lab for this information.
Accession	P08246
Stability and Storage	Use a manual defrost freezer and avoid repeated freeze-thaw cycles. Store at 4°C short term (1-2 weeks). Store at -20°C 12 months. Store at -80°C long term.

Note

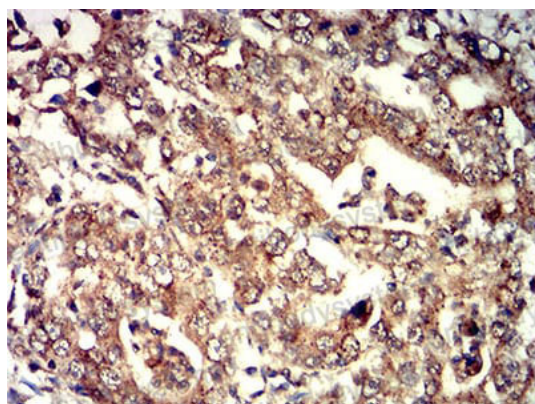
For research use only.

Data Image



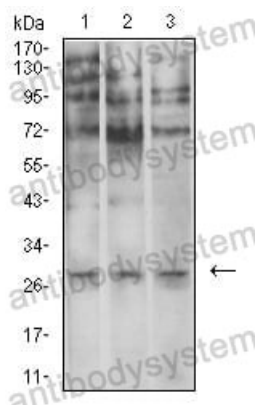
Flow Cytometry

Flow cytometric analysis of Hela cells using ELANE mouse mAb (green) and negative control (red).



Immunohistochemical

Immunohistochemical analysis of paraffin-embedded human stomach cancer tissues using ELANE mouse mAb with DAB staining.



Western blot

Western blot analysis using ELANE mouse mAb against U937 (1), SPC-A-1 (2), and COS7 (3) cell lysate.