

Anti-CD243/ABCB1 Antibody (R3A60)

Summary

Catalog No.	RHC31002
Clone ID	R3A60
Host species	Mouse
Tested applications	ELISA: 1:10000, FCM: 1:200-1:400
Species reactivity	Human
Form	Liquid
Storage buffer	0.01M PBS, pH 7.4, 0.05% Sodium Azide.
Concentration	1 mg/ml
Purity	>95% as determined by SDS-PAGE.
Clonality	Monoclonal
Isotype	IgG1
Applications	ELISA, FCM
Target	Phospholipid transporter ABCB1, MDR1, CD243, ATP-binding cassette sub-family B member 1, ABCB1, Multidrug resistance protein 1, P-glycoprotein 1, ATP-dependent translocase ABCB1, PGY1
Purification	Protein A/G purified from cell culture supernatant.
Endotoxin level	Please contact with the lab for this information.
Accession	P08183

Stability and Storage

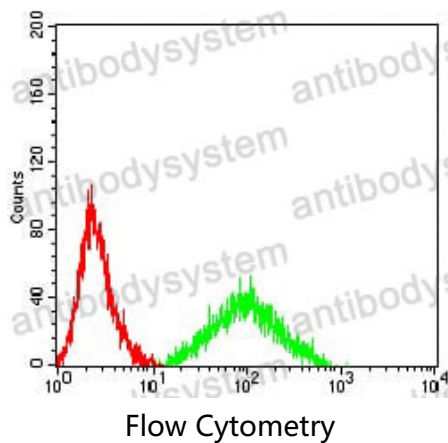
Use a manual defrost freezer and avoid repeated freeze-thaw cycles.

Store at 4°C short term (1-2 weeks). Store at -20°C 12 months. Store at -80°C long term.

Note

For research use only.

Data Image



Flow cytometric analysis of HL-60 cells using CD243 mouse mAb (green) and negative control (red).