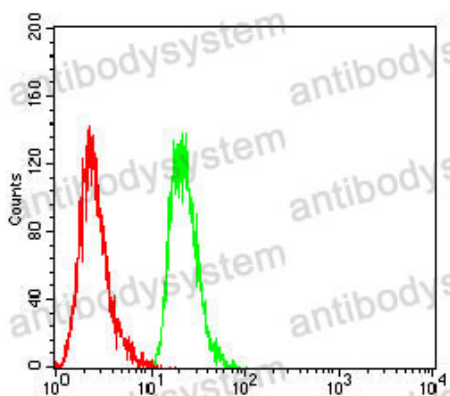


Anti-ERCC1 Antibody (R3A47)

Summary

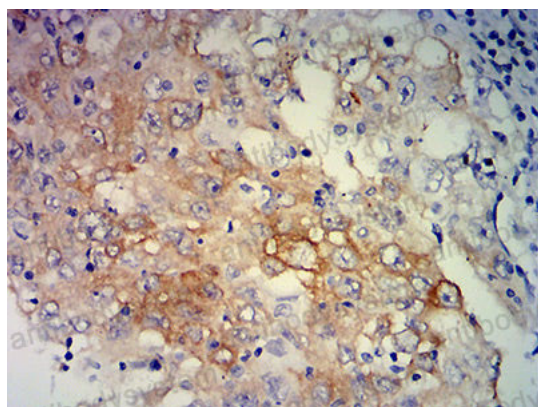
Catalog No.	RHC29305
Clone ID	R3A47
Host species	Mouse
Tested applications	ELISA: 1:10000, FCM: 1:200-1:400, IHC: 1:200-1:1000, WB: 1:500-1:2000
Species reactivity	Human, Mouse
Form	Liquid
Storage buffer	0.01M PBS, pH 7.4, 0.05% Sodium Azide.
Concentration	1 mg/ml
Purity	>95% as determined by SDS-PAGE.
Clonality	Monoclonal
Isotype	IgG1
Applications	ELISA, FCM, IHC, WB
Target	ERCC1, DNA excision repair protein ERCC-1
Purification	Protein A/G purified from cell culture supernatant.
Endotoxin level	Please contact with the lab for this information.
Accession	P07992
Stability and Storage	Use a manual defrost freezer and avoid repeated freeze-thaw cycles. Store at 4°C short term (1-2 weeks). Store at -20°C 12 months. Store at -80°C long term.
Note	For research use only.

Data Image



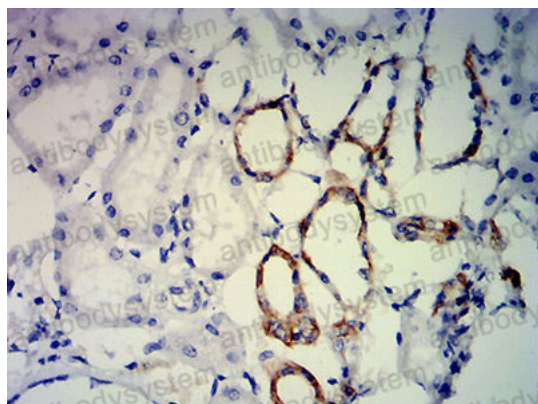
Flow Cytometry

Flow cytometric analysis of Hela cells using ERCC1 mouse mAb (green) and negative control (red).



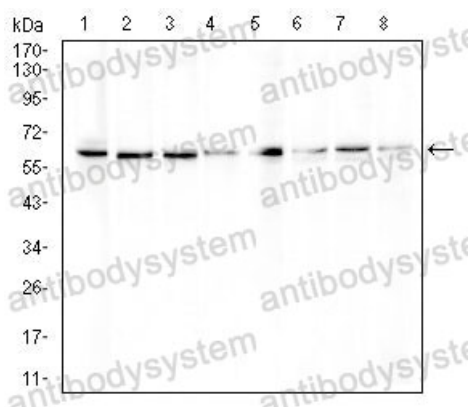
Immunohistochemical

Immunohistochemical analysis of paraffin-embedded human lung cancer tissues using ERCC1 mouse mAb with DAB staining.



Immunohistochemical

Immunohistochemical analysis of paraffin-embedded human kidney tissues using ERCC1 mouse mAb with DAB staining.



Western blot

Western blot analysis using ERCC1 mouse mAb against NIH/3T3 (1), MCF-7 (2), Hela (3), SK-Br-3 (4), HepG2 (5), Raji (6), PC-3 (7), and K562 (8) cell lysate.