

Anti-LYN Antibody (R3A39)

Summary

Catalog No.	RHC28802
Clone ID	R3A39
Host species	Mouse
Tested applications	WB: 1:500-1:2000
Species reactivity	Human
Form	Liquid
Storage buffer	0.01M PBS, pH 7.4, 0.05% Sodium Azide.
Concentration	1 mg/ml
Purity	>95% as determined by SDS-PAGE.
Clonality	Monoclonal
Isotype	IgG2b
Applications	WB
Target	Lck/Yes-related novel protein tyrosine kinase, p53Lyn, JTK8, p56Lyn, Tyrosine-protein kinase Lyn, LYN, V-yes-1 Yamaguchi sarcoma viral related oncogene homolog
Purification	Protein A/G purified from cell culture supernatant.
Endotoxin level	Please contact with the lab for this information.
Accession	P07948

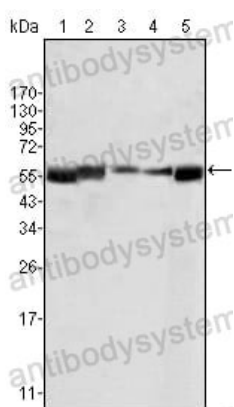
Stability and Storage

Use a manual defrost freezer and avoid repeated freeze-thaw cycles.

Store at 4°C short term (1-2 weeks). Store at -20°C 12 months. Store at -80°C long term.

Note

For research use only.

Data Image

Western blot

Western blot analysis using LYN mouse mAb againsts HL60 (1), L540 (2), SLLP-M2 (3), SEM (4) and Ramos (5) cell lysate.