

Anti-HSP90AA1 Antibody (R3A35)

Summary

Catalog No.	RHC28103
Clone ID	R3A35
Host species	Mouse
Tested applications	ELISA: 1:10000, FCM: 1:200-1:400, IHC: 1:200-1:1000, WB: 1:500-1:2000
Species reactivity	Human, Mouse, Monkey
Form	Liquid
Storage buffer	0.01M PBS, pH 7.4, 0.05% Sodium Azide.
Concentration	1 mg/ml
Purity	>95% as determined by SDS-PAGE.
Clonality	Monoclonal
Isotype	IgG1
Applications	ELISA, FCM, IHC, WB
Target	LPS-associated protein 2, Heat shock protein HSP 90-alpha, HSPCA, HSP90A, HSP 86, Lipopolysaccharide-associated protein 2, HSP86, HSP90AA1, Heat shock 86 kDa, Renal carcinoma antigen NY-REN-38, LAP-2, HSPC1
Purification	Protein A/G purified from cell culture supernatant.
Endotoxin level	Please contact with the lab for this information.
Accession	P07900

Stability and Storage

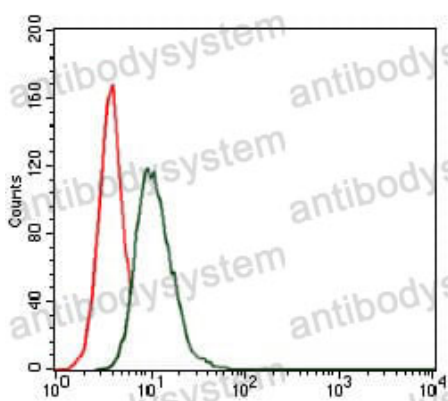
Use a manual defrost freezer and avoid repeated freeze-thaw cycles.

Store at 4°C short term (1-2 weeks). Store at -20°C 12 months. Store at -80°C long term.

Note

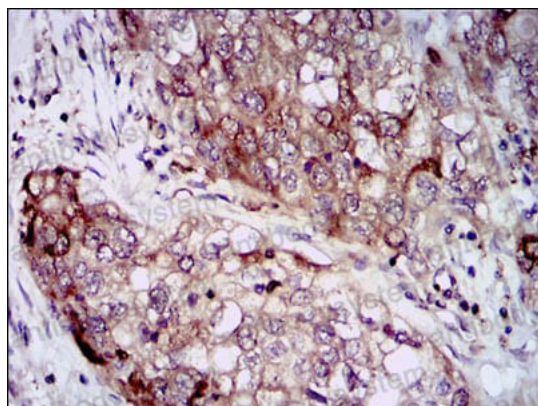
For research use only.

Data Image



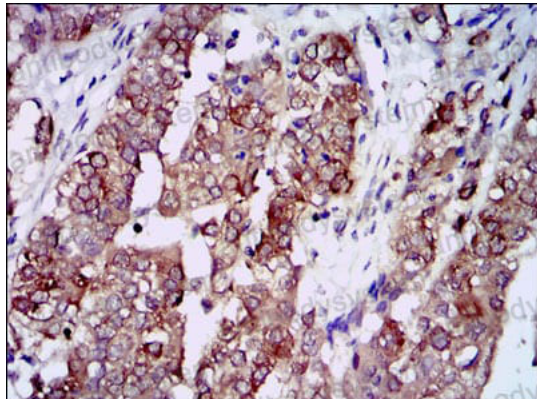
Flow Cytometry

Flow cytometric analysis of HeLa cells using HSP90AA1 mouse mAb (green) and negative control (red).



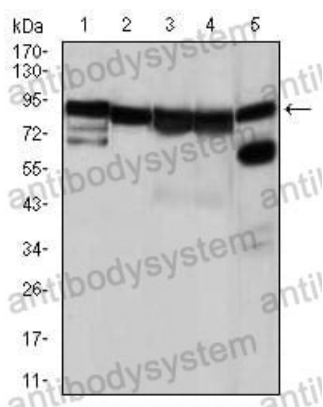
Immunohistochemical

Immunohistochemical analysis of paraffin-embedded human lung cancer tissues using HSP90AA1 mouse mAb with DAB staining.



Immunohistochemical

Immunohistochemical analysis of paraffin-embedded human bladder cancer tissues using HSP90AA1 mouse mAb with DAB staining.



Western blot

Western blot analysis using HSP90AA1 mouse mAb against NIH3T3 (1), HeLa (2), HCT116(3), HL-60 (4) and C0S7 (5) cell lysate.