

# Anti-PSAP Antibody (R3A32)

## Summary

---

<b>Catalog No.</b>	RHC27101
<b>Clone ID</b>	R3A32
<b>Host species</b>	Mouse
<b>Tested applications</b>	ELISA: 1:10000, IHC: 1:200-1:1000, WB: 1:500-1:2000
<b>Species reactivity</b>	Human, Rat
<b>Form</b>	Liquid
<b>Storage buffer</b>	0.01M PBS, pH 7.4, 0.05% Sodium Azide.
<b>Concentration</b>	1 mg/ml
<b>Purity</b>	>95% as determined by SDS-PAGE.
<b>Clonality</b>	Monoclonal
<b>Isotype</b>	IgG1
<b>Applications</b>	ELISA, IHC, WB
<b>Target</b>	Dispersin, SAP1, Prosaposin, SAP-1, Sulfatide/GM1 activator, Proactivator polypeptide, SAP-2, Protein C, Sphingolipid activator protein 1, CSAct, PSAP, GLBA, Sphingolipid activator protein 2, Co-beta-glucosidase, Cerebroside sulfate activator, Component C, A1 activator, Protein A, Glucosylceramidase activator
<b>Purification</b>	Protein A/G purified from cell culture supernatant.
<b>Endotoxin level</b>	Please contact with the lab for this information.
<b>Accession</b>	P07602

**Stability and Storage**

Use a manual defrost freezer and avoid repeated freeze-thaw cycles.

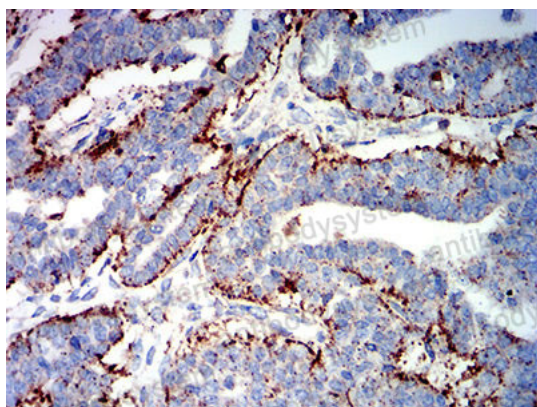
Store at 4°C short term (1-2 weeks). Store at -20°C 12 months. Store at -80°C long term.

**Note**

For research use only.

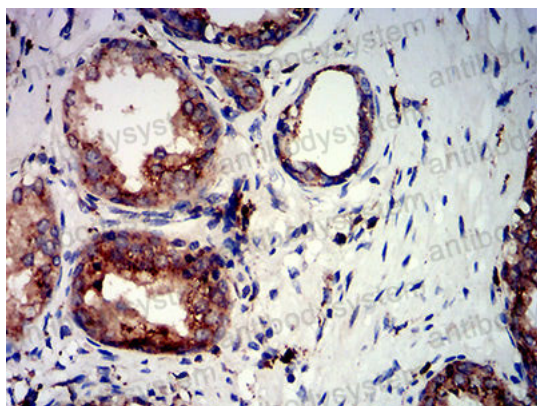
**Data Image**

---



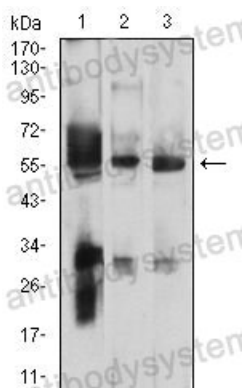
Immunohistochemical

Immunohistochemical analysis of paraffin-embedded human ovarian cancer tissues using PSAP mouse mAb with DAB staining.



Immunohistochemical

Immunohistochemical analysis of paraffin-embedded human prostate cancer tissues using PSAP mouse mAb with DAB staining.



Western blot

Western blot analysis using PSAP mouse mAb against HEK293 (1), C6 (2), and HT1080 (3) cell lysate.