

Anti-PSAP Antibody (R3A31)

Summary

Catalog No.	RHC27103
Clone ID	R3A31
Host species	Mouse
Tested applications	ELISA: 1:10000, FCM: 1:200-1:400, IF: 1:200-1:1000, IHC: 1:200-1:1000, WB: 1:500-1:2000
Species reactivity	Human, Rat
Form	Liquid
Storage buffer	0.01M PBS, pH 7.4, 0.05% Sodium Azide.
Concentration	1 mg/ml
Purity	>95% as determined by SDS-PAGE.
Clonality	Monoclonal
Isotype	IgG1
Applications	ELISA, FCM, IF, IHC, WB
Target	Dispersin, SAP1, Prosaposin, SAP-1, Sulfatide/GM1 activator, Proactivator polypeptide, SAP-2, Protein C, Sphingolipid activator protein 1, CSAct, PSAP, GLBA, Sphingolipid activator protein 2, Co-beta-glucosidase, Cerebroside sulfate activator, Component C, A1 activator, Protein A, Glucosylceramidase activator
Purification	Protein A/G purified from cell culture supernatant.
Endotoxin level	Please contact with the lab for this information.
Accession	P07602

Stability and Storage

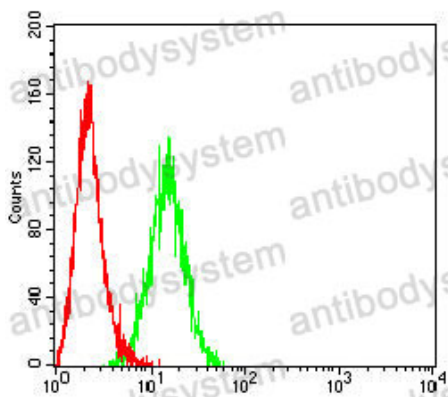
Use a manual defrost freezer and avoid repeated freeze-thaw cycles.

Store at 4°C short term (1-2 weeks). Store at -20°C 12 months. Store at -80°C long term.

Note

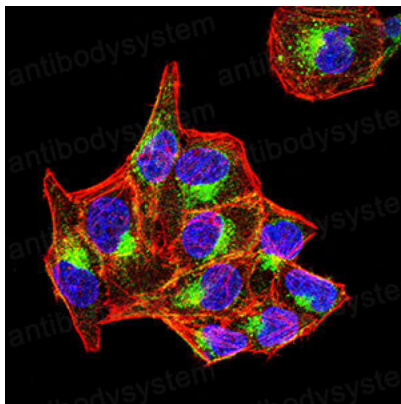
For research use only.

Data Image



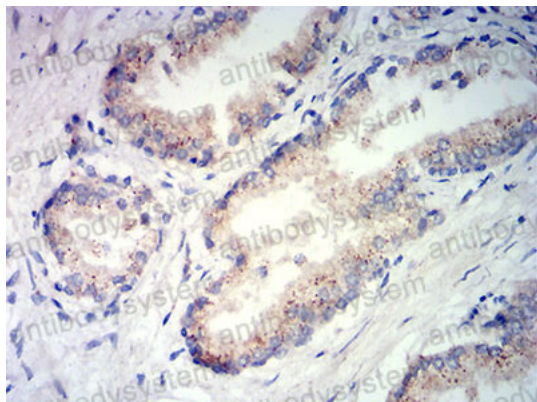
Flow Cytometry

Flow cytometric analysis of Hela cells using PSAP mouse mAb (green) and negative control (red).



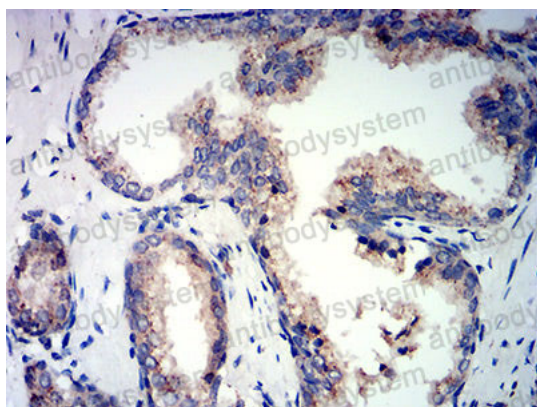
Immunofluorescence

Immunofluorescence analysis of Hela cells using PSAP mouse mAb (green). Blue: DRAQ5 fluorescent DNA dye. Red: Actin filaments have been labeled with Alexa Fluor-555 phalloidin.



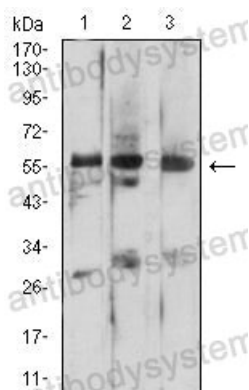
Immunohistochemical

Immunohistochemical analysis of paraffin-embedded human prostate tissues using PSAP mouse mAb with DAB staining.



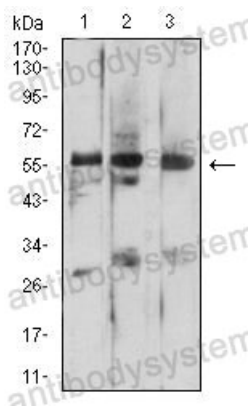
Immunohistochemical

Immunohistochemical analysis of paraffin-embedded human prostate cancer tissues using PSAP mouse mAb with DAB staining.



Western blot

Western blot analysis using PSAP mouse mAb against HEK293 (1), C6 (2), and HT1080 (3) cell lysate.



Western blot

Western blot analysis using PSAP mouse mAb against HEK293 (1), C6 (2), and HT1080 (3) cell lysate.