

Anti-CAPN1 Antibody (R3A24)

Summary

Catalog No.	RHC25903
Clone ID	R3A24
Host species	Mouse
Tested applications	ELISA: 1:10000, FCM: 1:200-1:400, IHC: 1:200-1:1000, WB: 1:500-1:2000
Species reactivity	Human
Form	Liquid
Storage buffer	0.01M PBS, pH 7.4, 0.05% Sodium Azide.
Concentration	1 mg/ml
Purity	>95% as determined by SDS-PAGE.
Clonality	Monoclonal
Isotype	IgG2a
Applications	ELISA, FCM, IHC, WB
Target	Calpain-1 catalytic subunit, CANPL1, Calpain-1 large subunit, CAPN1, muCANP, CANP 1, Micromolar-calpain, Cell proliferation-inducing gene 30 protein, Calpain mu-type, Calcium-activated neutral proteinase 1
Purification	Protein A/G purified from cell culture supernatant.
Endotoxin level	Please contact with the lab for this information.
Accession	P07384

Stability and Storage

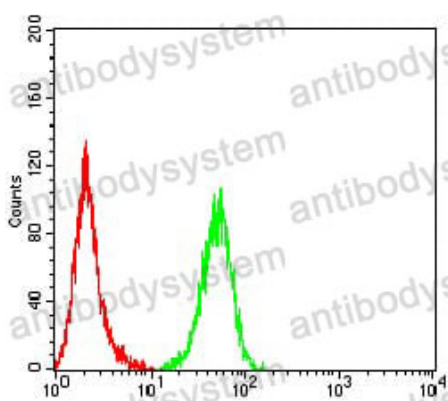
Use a manual defrost freezer and avoid repeated freeze-thaw cycles.

Store at 4°C short term (1-2 weeks). Store at -20°C 12 months. Store at -80°C long term.

Note

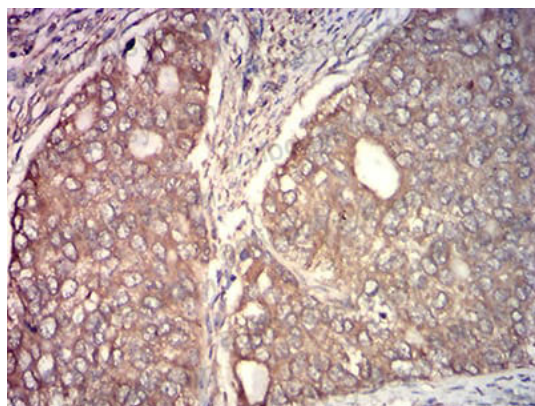
For research use only.

Data Image



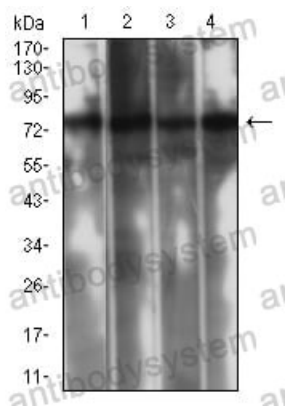
Flow Cytometry

Flow cytometric analysis of Hela cells using CAPN1 mouse mAb (green) and negative control (red).



Immunohistochemical

Immunohistochemical analysis of paraffin-embedded human cervical cancer tissues using CAPN1 mouse mAb with DAB staining.



Western blot

Western blot analysis using CAPN1 mouse mAb against Jurkat (1), K562 (2), MCF-7 (3), and PC-3 (4) cell lysate.