

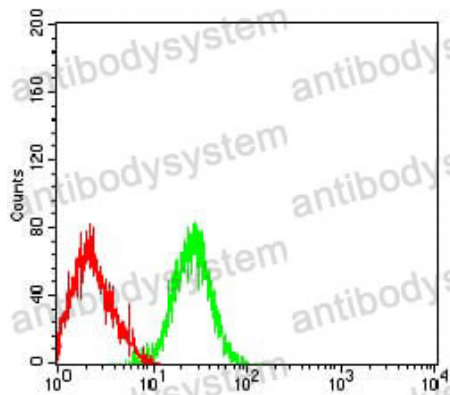
Anti-CD42b/GP1BA Antibody (R3A22)

Summary

Catalog No.	RHC25703
Clone ID	R3A22
Host species	Mouse
Tested applications	ELISA: 1:10000, FCM: 1:200-1:400, WB: 1:500-1:2000
Species reactivity	Human
Form	Liquid
Storage buffer	0.01M PBS, pH 7.4, 0.05% Sodium Azide.
Concentration	1 mg/ml
Purity	>95% as determined by SDS-PAGE.
Clonality	Monoclonal
Isotype	IgG1
Applications	ELISA, FCM, WB
Target	CD42b, GP-Ib alpha, Antigen CD42b-alpha, GPIb-alpha, GPIbA, Glycoprotein Ibalpha, Platelet glycoprotein Ib alpha chain, GP1BA
Purification	Protein A/G purified from cell culture supernatant.
Endotoxin level	Please contact with the lab for this information.
Accession	P07359
Stability and Storage	Use a manual defrost freezer and avoid repeated freeze-thaw cycles. Store at 4°C short term (1-2 weeks). Store at -20°C 12 months. Store at -80°C long term.

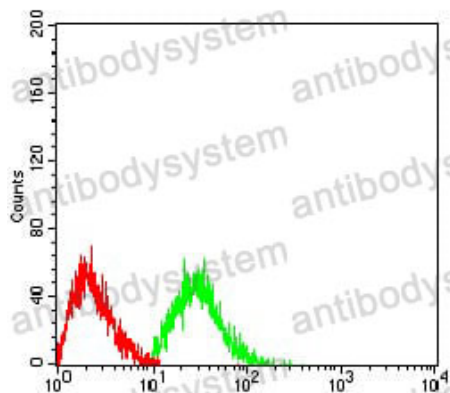
Note For research use only.

Data Image



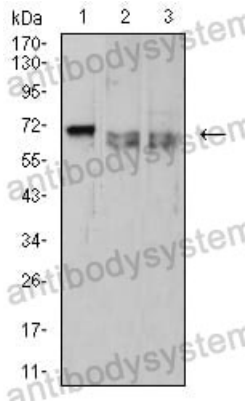
Flow Cytometry

Flow cytometric analysis of HL-60 cells using CD42B mouse mAb (green) and negative control (red).



Flow Cytometry

Flow cytometric analysis of Jurkat cells using CD42B mouse mAb (green) and negative control (red).



Western blot

Western blot analysis using CD42B mouse mAb against HL-60 (1), MOLT4 (2), and Ramos (3) cell lysate.