

Anti-PSA/KLK3 Antibody (R3A13)

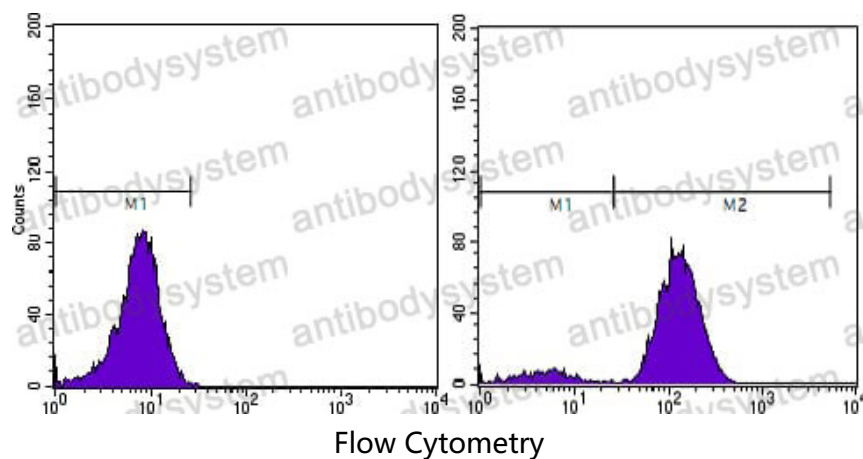
Summary

| | |
|------------------------------|-----------------------------------------------------------------------------------------------------------------------------------------------------------------|
| Catalog No. | RHC24203 |
| Clone ID | R3A13 |
| Host species | Mouse |
| Tested applications | FCM: 1:200-1:400, IHC: 1:200-1:1000 |
| Species reactivity | Human |
| Form | Liquid |
| Storage buffer | 0.01M PBS, pH 7.4, 0.05% Sodium Azide. |
| Concentration | 1 mg/ml |
| Purity | >95% as determined by SDS-PAGE. |
| Clonality | Monoclonal |
| Isotype | IgG1 |
| Applications | FCM, IHC |
| Target | Prostate-specific antigen, KLK3, Kallikrein-3, APS, Semenogelase, PSA, Gamma-seminoprotein, Semin, P-30 antigen |
| Purification | Protein A/G purified from cell culture supernatant. |
| Endotoxin level | Please contact with the lab for this information. |
| Accession | P07288 |
| Stability and Storage | Use a manual defrost freezer and avoid repeated freeze-thaw cycles. Store at 4°C short term (1-2 weeks). Store at -20°C 12 months. Store at -80°C long term. |

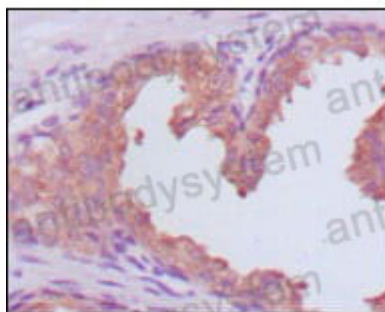
Note

For research use only.

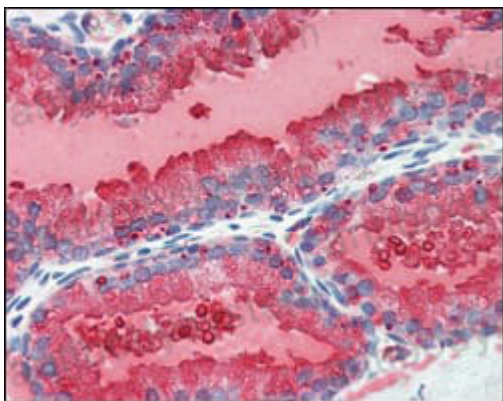
Data Image



Flow cytometric analysis of PC-3 cells using KLK3 mouse mAb (right) and negative control (left).



Immunohistochemical analysis of paraffin-embedded human prostate carcinoma tissues, showing cytoplasmic localization using KLK3 mouse mAb with DAB staining.



Immunohistochemical analysis of paraffin-embedded human prostate tissues using KLK3 mouse mAb with DAB staining.