

Anti-NEFM Antibody (R3A06)

Summary

Catalog No.	RHC23402
Clone ID	R3A06
Host species	Mouse
Tested applications	ELISA: 1:10000, FCM: 1:200-1:400, WB: 1:500-1:2000
Species reactivity	Human
Form	Liquid
Storage buffer	0.01M PBS, pH 7.4, 0.05% Sodium Azide.
Concentration	1 mg/ml
Purity	>95% as determined by SDS-PAGE.
Clonality	Monoclonal
Isotype	IgG1
Applications	ELISA, FCM, WB
Target	NF-M, NFM, Neurofilament triplet M protein, NEFM, 160 kDa neurofilament protein, NEF3, Neurofilament 3, Neurofilament medium polypeptide
Purification	Protein A/G purified from cell culture supernatant.
Endotoxin level	Please contact with the lab for this information.
Accession	P07197

Stability and Storage

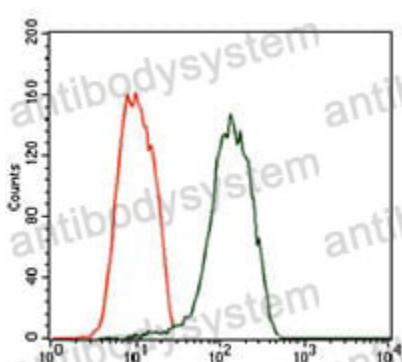
Use a manual defrost freezer and avoid repeated freeze-thaw cycles.

Store at 4°C short term (1-2 weeks). Store at -20°C 12 months. Store at -80°C long term.

Note

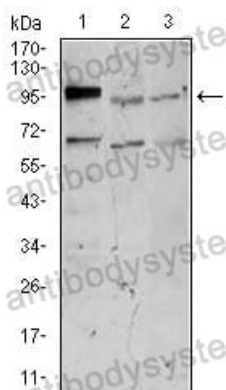
For research use only.

Data Image



Flow Cytometry

Flow cytometric analysis of SK-N-SH cells using NEFM mouse mAb (green) and negative control (red).



Western blot

Western blot analysis using NEFM mouse mAb against NTERA-2 (1), SK-N-SH (2), and PC-12 (3) cell lysate.