

Anti-NEFL Antibody (R3A05)

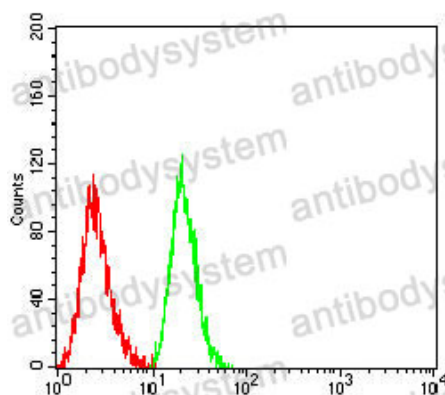
Summary

Catalog No.	RHC23301
Clone ID	R3A05
Host species	Mouse
Tested applications	ELISA: 1:10000, FCM: 1:200-1:400, IHC: 1:100-1:500, WB: 1:500-1:2000
Species reactivity	Human, Mouse, Rat, Rabbit
Form	Liquid
Storage buffer	0.01M PBS, pH 7.4, 0.05% Sodium Azide.
Concentration	1 mg/ml
Purity	>95% as determined by SDS-PAGE.
Clonality	Monoclonal
Isotype	IgG1
Applications	ELISA, FCM, IHC, WB
Target	NEFL, Neurofilament light polypeptide, 68 kDa neurofilament protein, NF68, Neurofilament triplet L protein, NF-L, NFL
Purification	Protein A/G purified from cell culture supernatant.
Endotoxin level	Please contact with the lab for this information.
Accession	P07196
Stability and Storage	Use a manual defrost freezer and avoid repeated freeze-thaw cycles. Store at 4°C short term (1-2 weeks). Store at -20°C 12 months. Store at -80°C long term.

Note

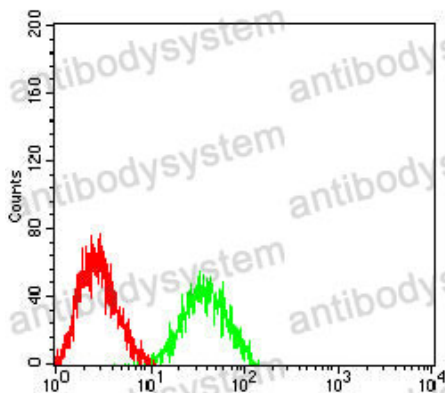
For research use only.

Data Image



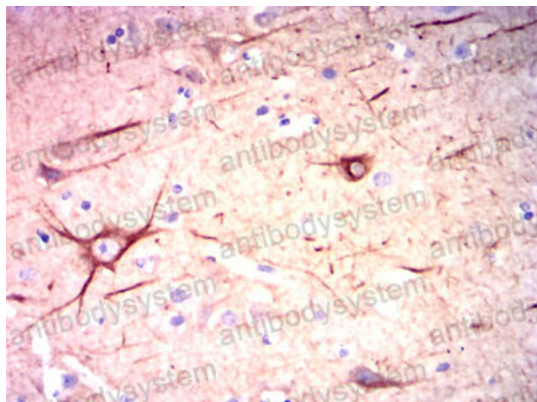
Flow Cytometry

Flow cytometric analysis of Jurkat cells using NEFL mouse mAb (green) and negative control (red).



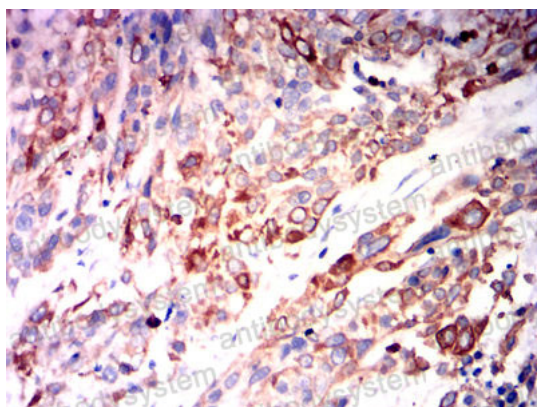
Flow Cytometry

Flow cytometric analysis of SK-N-SH cells using NEFL mouse mAb (green) and negative control (red).



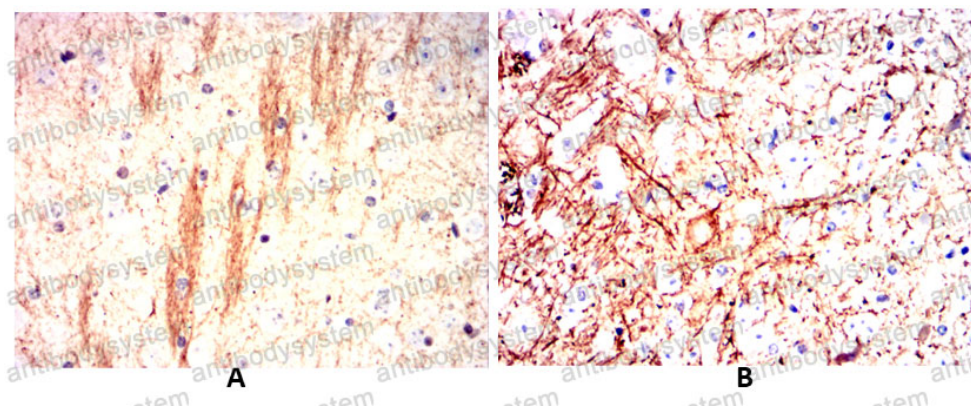
Immunohistochemical

Immunohistochemical analysis of paraffin-embedded human brain tissues using NEFL mouse mAb with DAB staining.



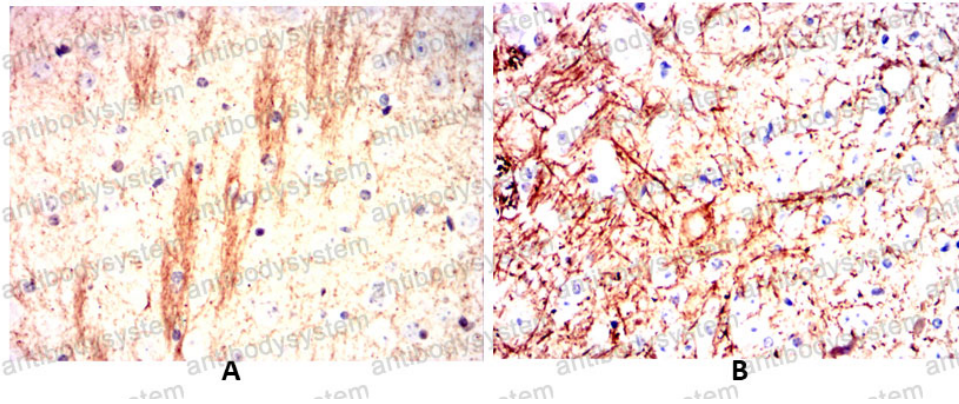
Immunohistochemical

Immunohistochemical analysis of paraffin-embedded human esophageal cancer tissues using NEFL mouse mAb with DAB staining.



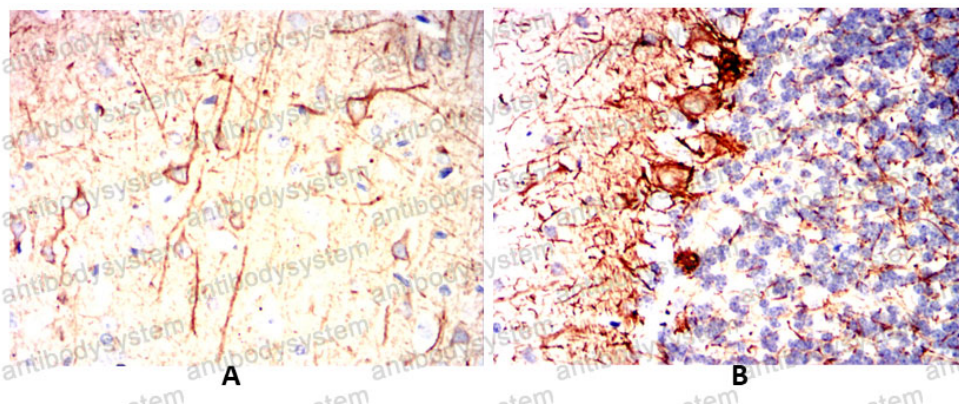
Immunohistochemical

Immunohistochemical analysis of paraffin-embedded Mouse brain(A) Mouse cerebellum(B) using NEFL mouse mAb with DAB staining.



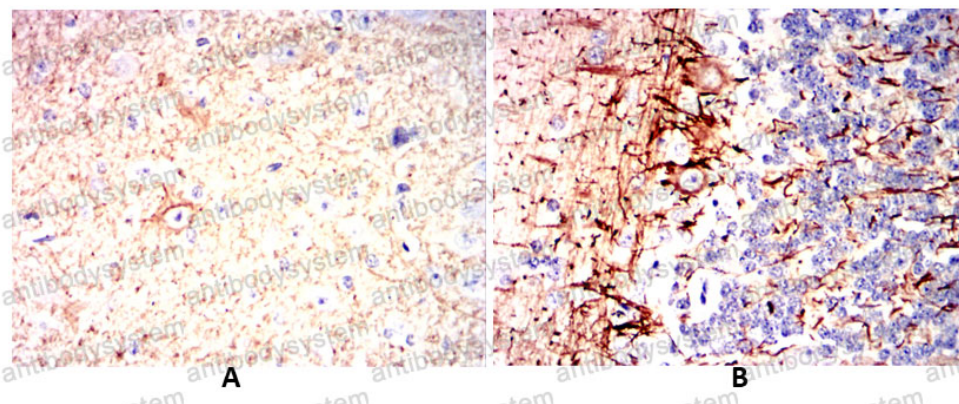
Immunohistochemical analysis of paraffin-embedded Mouse brain(A) Mouse cerebellum(B) using NEFL mouse mAb with DAB staining.

Immunohistochemical



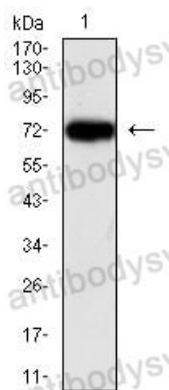
Immunohistochemical analysis of paraffin-embedded Rat brain(A) Rat cerebellum(B) using NEFL mouse mAb with DAB staining.

Immunohistochemical



Immunohistochemical analysis of paraffin-embedded Rabbit brain(A) Rabbit cerebellum(B) using NEFL mouse mAb with DAB staining.

Immunohistochemical



Western blot

Western blot analysis using
NEFL mouse mAb against
HEK293 (1) cell lysate.