

Anti-HEXA Antibody (R3A01)

Summary

Catalog No.	RHC22201
Clone ID	R3A01
Host species	Mouse
Tested applications	ELISA: 1:10000, FCM: 1:200-1:400, WB: 1:500-1:2000
Species reactivity	Human
Form	Liquid
Storage buffer	0.01M PBS, pH 7.4, 0.05% Sodium Azide.
Concentration	1 mg/ml
Purity	>95% as determined by SDS-PAGE.
Clonality	Monoclonal
Isotype	IgG2b
Applications	ELISA, FCM, WB
Target	Beta-hexosaminidase subunit alpha, HEXA, Beta-N-acetylhexosaminidase subunit alpha, Hexosaminidase subunit A, N-acetyl-beta-glucosaminidase subunit alpha
Purification	Protein A/G purified from cell culture supernatant.
Endotoxin level	Please contact with the lab for this information.
Accession	P06865

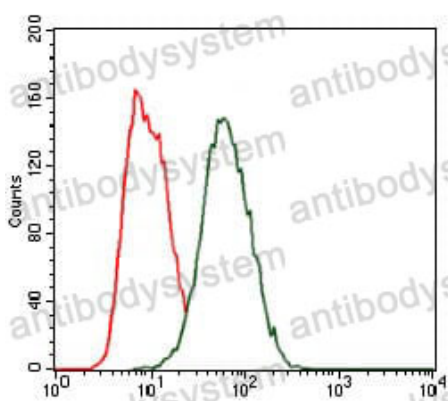
Stability and Storage

Use a manual defrost freezer and avoid repeated freeze-thaw cycles.

Store at 4°C short term (1-2 weeks). Store at -20°C 12 months. Store at -80°C long term.

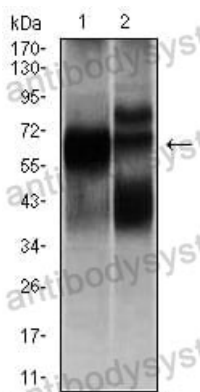
Note

For research use only.

Data Image

Flow Cytometry

Flow cytometric analysis of HeLa cells using HEXA mouse mAb (green) and negative control (red).



Western blot

Western blot analysis using HEXA mouse mAb against L1210 (1), and HL7702 (2) cell lysate.