

Anti-NPM1 Antibody (R2Z97)

Summary

Catalog No.	RHC21704
Clone ID	R2Z97
Host species	Mouse
Tested applications	IF: 1:200-1:1000, IHC: 1:200-1:1000, WB: 1:500-1:2000
Species reactivity	Human, Monkey
Form	Liquid
Storage buffer	0.01M PBS, pH 7.4, 0.05% Sodium Azide.
Concentration	1 mg/ml
Purity	>95% as determined by SDS-PAGE.
Clonality	Monoclonal
Isotype	IgG1
Applications	IF, IHC, WB
Target	NPM, Nucleolar protein NO38, Numatrin, NPM1, Nucleolar phosphoprotein B23, Nucleophosmin
Purification	Protein A/G purified from cell culture supernatant.
Endotoxin level	Please contact with the lab for this information.
Accession	P06748
Stability and Storage	Use a manual defrost freezer and avoid repeated freeze-thaw cycles. Store at 4°C short term (1-2 weeks). Store at -20°C 12 months. Store at -80°C long term.

Note

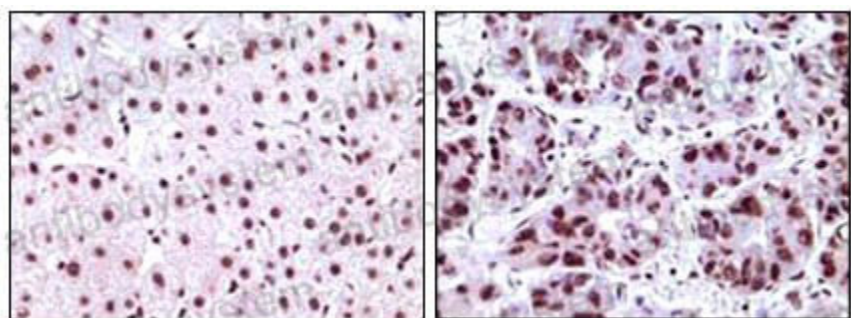
For research use only.

Data Image



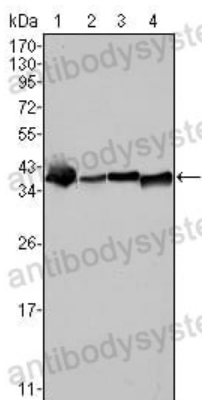
Immunofluorescence

Confocal Immunofluorescence analysis of HeLa (left) and NTERA-2 (right) cells using NPM mouse mAb (green). Red: Actin filaments have been labeled with DY-554 phalloidin.



Immunohistochemical

Immunohistochemical analysis of paraffin-embedded human liver carcinoma tissues, showing nuclear localization using NPM mouse mAb with DAB staining.



Western blot

Western blot analysis using NPM mouse mAb against SMMC-7721 (1), HepG2 (2), HeLa (3) and HEK293 (4) cell lysate.