

Anti-GPI Antibody (R2Z96)

Summary

Catalog No.	RHC21502
Clone ID	R2Z96
Host species	Mouse
Tested applications	IF: 1:200-1:1000, IHC: 1:200-1:1000, WB: 1:500-1:2000
Species reactivity	Human
Form	Liquid
Storage buffer	0.01M PBS, pH 7.4, 0.05% Sodium Azide.
Concentration	1 mg/ml
Purity	>95% as determined by SDS-PAGE.
Clonality	Monoclonal
Isotype	IgG1
Applications	IF, IHC, WB
Target	GPI, NLK, Neuroleukin, Phosphohexose isomerase, PHI, Sperm antigen 36, Autocrine motility factor, AMF, SA-36, PGI, Glucose-6-phosphate isomerase, Phosphoglucose isomerase
Purification	Protein A/G purified from cell culture supernatant.
Endotoxin level	Please contact with the lab for this information.
Accession	P06744

Stability and Storage

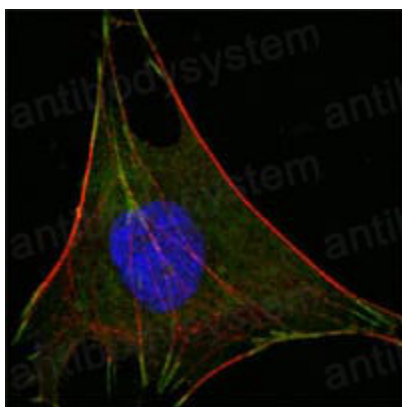
Use a manual defrost freezer and avoid repeated freeze-thaw cycles.

Store at 4°C short term (1-2 weeks). Store at -20°C 12 months. Store at -80°C long term.

Note

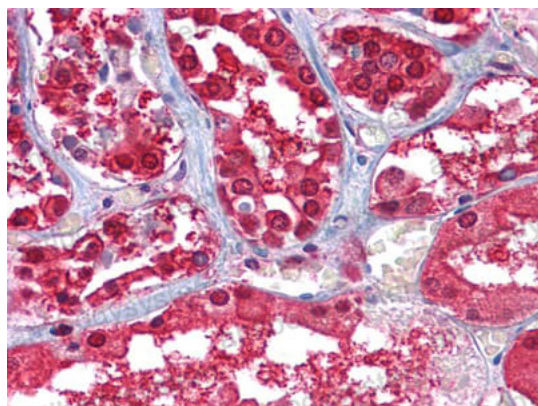
For research use only.

Data Image



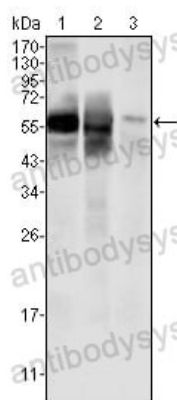
Immunofluorescence

Confocal Immunofluorescence analysis of L-02 cells using GPI mouse mAb (green). Red: Actin filaments have been labeled with DY-554 phalloidin. Blue: DRAQ5 fluorescent DNA dye.



Immunohistochemical

Immunohistochemical analysis of paraffin-embedded human Kidney tissues using GPI mouse mAb.

**Western blot**

Western blot analysis using GPI mouse mAb against HepG2 (1) , SMMC-7721 (2) cell lysate and rat liver tissues lysate (3).