

Anti-ENO1/Alpha-enolase Antibody (R2Z93)

Summary

Catalog No.	RHC21206
Clone ID	R2Z93
Host species	Mouse
Tested applications	WB: 1:500-1:1000
Species reactivity	Human, Mouse, Rat, Monkey
Form	Liquid
Storage buffer	0.01M PBS, pH 7.4, 0.5% BSA, 0.05% Sodium Azide and 50% Glycerol.
Concentration	1 mg/ml
Purity	>95% as determined by SDS-PAGE.
Clonality	Monoclonal
Isotype	IgG1
Applications	WB
Target	Non-neural enolase, 2-phospho-D-glycerate hydro-lyase, MPB-1, ENO1, Plasminogen-binding protein, Enolase 1, C-myc promoter-binding protein, Alpha-enolase, MBP-1, MBPB1, MPB1, ENO1L1, NNE, Phosphopyruvate hydratase
Purification	Protein A/G purified from cell culture supernatant.
Endotoxin level	Please contact with the lab for this information.
Accession	P06733

Stability and Storage

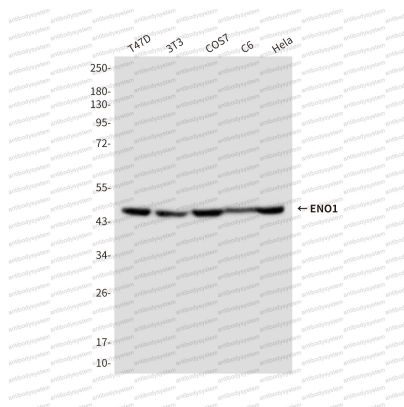
Use a manual defrost freezer and avoid repeated freeze-thaw cycles.

Store at 4°C short term (1-2 weeks). Store at -20°C 12 months. Store at -80°C long term.

Note

For research use only.

Data Image



Western blot

Western blot analysis of Enolase1 in T47D, 3T3, COS7, C6 and HeLa lysates using Enolase1 antibody.