

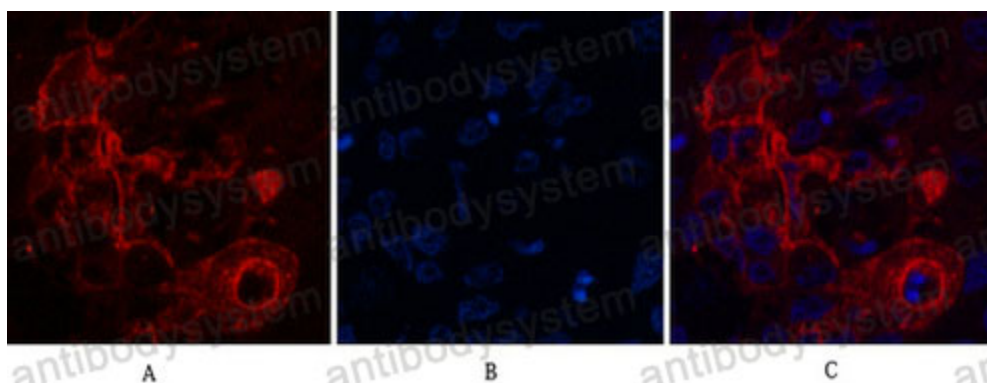
Anti-CD66e/CEA/CEACAM5 Antibody (R2Z89)

Summary

Catalog No.	RHC21011
Clone ID	R2Z89
Host species	Mouse
Tested applications	IF: 1:50-1:200, IHC: 1:50-1:100
Species reactivity	Human
Form	Liquid
Storage buffer	0.01M PBS, pH 7.4, 0.5% BSA, 0.05% Sodium Azide and 50% Glycerol.
Concentration	1 mg/ml
Purity	>95% as determined by SDS-PAGE.
Clonality	Monoclonal
Isotype	IgG1
Applications	IF, IHC
Target	Meconium antigen 100, CEACAM5, CEA, CD66e, Carcinoembryonic antigen-related cell adhesion molecule 5, Carcinoembryonic antigen
Purification	Protein A/G purified from cell culture supernatant.
Endotoxin level	Please contact with the lab for this information.
Accession	P06731
Stability and Storage	Use a manual defrost freezer and avoid repeated freeze-thaw cycles. Store at 4°C short term (1-2 weeks). Store at -20°C 12 months. Store at -80°C long term.

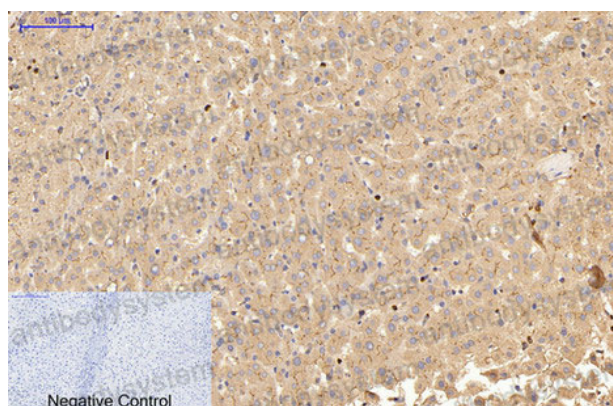
Note

For research use only.

Data Image

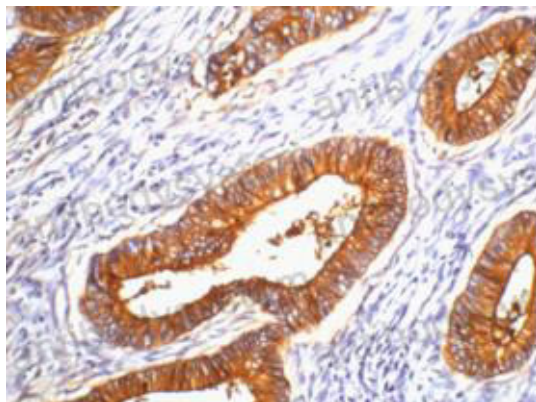
Immunofluorescence

Immunofluorescence analysis of Carcino Embryonic Antigen CEA in Human lung cancer tissue using Carcino Embryonic Antigen CEA antibody (red), and DAPI (blue).



Immunohistochemical

Immunohistochemistry analysis of paraffin-embedded Human liver tissue using Carcino Embryonic Antigen CEA antibody. High-pressure and temperature Sodium Citrate pH 6.0 was used for antigen retrieval. Negative control was used by secondary antibody only.



Immunohistochemical

Immunohistochemistry analysis of paraffin-embedded Human colon cancer tissue using Carcino Embryonic Antigen CEA antibody. High-pressure and temperature Sodium Citrate pH 6.0 was used for antigen retrieval.