

Anti-EIF4E Antibody (R2Z84)

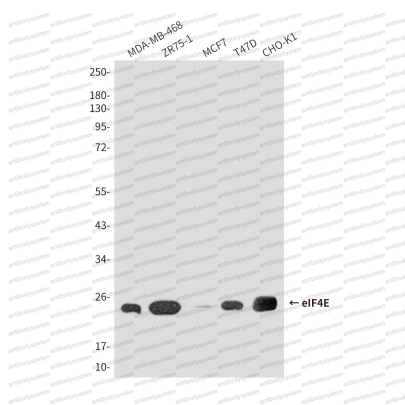
Summary

| | |
|------------------------------|---|
| Catalog No. | RHC20905 |
| Clone ID | R2Z84 |
| Host species | Mouse |
| Tested applications | WB: 1:500-1:1000 |
| Species reactivity | Human, Mouse, Rat |
| Form | Liquid |
| Storage buffer | 0.01M PBS, pH 7.4, 0.5% BSA, 0.05% Sodium Azide and 50% Glycerol. |
| Concentration | 1 mg/ml |
| Purity | >95% as determined by SDS-PAGE. |
| Clonality | Monoclonal |
| Isotype | IgG1 |
| Applications | WB |
| Target | Eukaryotic translation initiation factor 4E, EIF4F, mRNA cap-binding protein, eIF4E, eIF-4E, eIF-4F 25 kDa subunit, EIF4EL1, EIF4E |
| Purification | Protein A/G purified from cell culture supernatant. |
| Endotoxin level | Please contact with the lab for this information. |
| Accession | P06730 |
| Stability and Storage | Use a manual defrost freezer and avoid repeated freeze-thaw cycles. Store at 4°C short term (1-2 weeks). Store at -20°C 12 months. Store at -80°C long term. |

Note

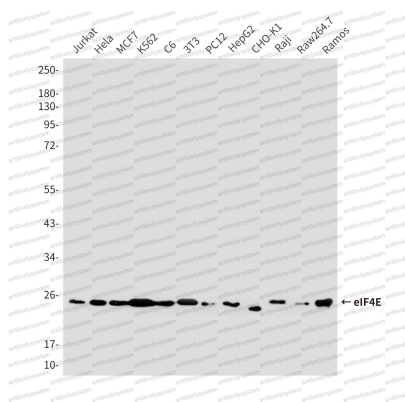
For research use only.

Data Image



Western blot

Western blot analysis of eIF4E in MDA-MB-468, ZR751, MCF-7, T47D and CHO-K1 lysates using eIF4E antibody.



Western blot

Western blot analysis of eIF4E in Jurkat, Hela, MCF-7, K562, C6, 3T3, PC-12, HepG2, CHO-K1, Raji, Raw264.7 and Ramos lysates using eIF4E antibody.